

Design Your Own Cloth Doll Class

©1995 with additions copyrighted 1996-2019

Taught by Judi Ward of Judi's Dolls

Chapter 6 and 7

Chapters 6 - Methods of Face Design

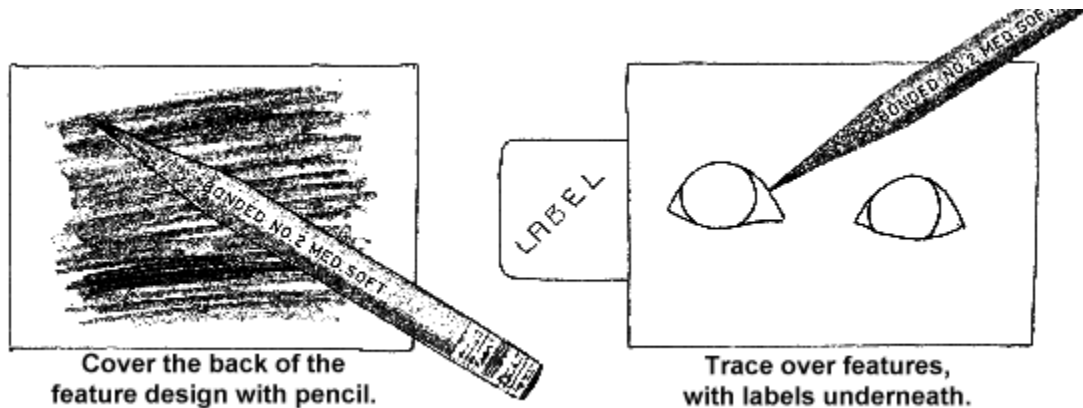
Hopefully you have a doll, or several dolls ready for faces and hair. Many of you will already have faces on your dolls, because drawing faces is easy for you and a part of dollmaking that you love. What I will teach you, are ways to DESIGN faces if you do not draw faces free hand.

Some of you will paint the faces, some will use pens, crayons and colored pencils, and some will embroider. This is your doll design, so do the faces in any medium that you like and feel comfortable with. This class will not be teaching face finishing. It will be teaching methods for face designing for the non-artist. A doll's face is often the special finishing touch that brings your creation to life, so if the finishing is hard for you, work at it on fabric, over batting, stretched across an embroidery hoop. Try lots of methods. There is a wealth of information on face finishing in every pattern that you own and in books too. You will come up with a medium, I.E. paint, crayon, pencils etc that you love and can do with ease if you practice. When you get a good face in the embroidery hoop, you can turn it into a doll now by designing one from the methods you just learned in class. The first method I will teach you is designing a face by drawing around ordinary household objects. The second method I will teach you is designing from a magazine photo of a real person.

When you can design the face yourself, your dolls are even more special, but many doll makers don't feel that they are artistic enough to design their own doll faces. With these methods you can. I do my dolls faces freehand, but have devised and tested methods of face designing that use paper, self stick labels, magazines, coloring books, greeting cards, and ordinary household objects to draw around for eyebrows, nose curves and shapes, irises of the eyes, eyebrows and eyelashes. Household objects to draw around, are coins, jars, toothpaste caps, buttons, pen caps, etc. You can design the faces in any size, then shrink them down to a variety of sizes on a copy machine.

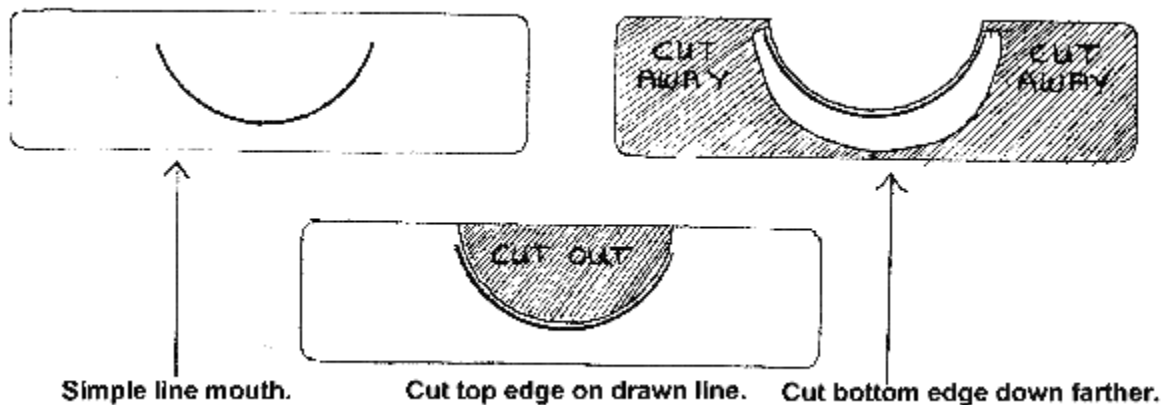
After you design a face and size it for your doll, you will transfer the features to the Self-Stick Labels. (Avery is one brand of these labels) Then you will cut them out, place them on your doll's stuffed head and draw **JUST UNDER THE EDGE** of the cut outs **VERY LIGHTLY** with a **VERY** sharp pencil, or colored pencil of nearly the same shade as your doll's skin. **REMEMBER!** When you draw **AROUND** something it gets bigger, so you want to draw **JUST UNDER THE EDGE** of your cut outs, or your face may be too big.

The way you transfer the features to the labels is to first cover the back of the paper the features are on with pencil, by holding the pencil sideways, and rubbing it back and forth until the features have pencil on the backs. Put a label under each feature, and then trace the feature. The pencil on the back of the paper will act like a carbon, and the feature shapes will be on the labels....**NOTE...**Don't use freezer paper for this part, the pencil won't transfer off to the label from freezer paper.



Features that are just lines can be cut from the labels but it's a little hard to peel the backing off without tearing them. For the very simple line features you can probably freehand them if you just practice a little first.

If you do cut them from labels, cut right on the line you drew for the top edge and a little ways down for the bottom edge. You only need the top edge to draw around.



The easiest way to get the backing off of the labels after you cut a feature out, is to slip the point of a needle between the paper backing and the label. Be sure to have your bifocals tuned up for this part!

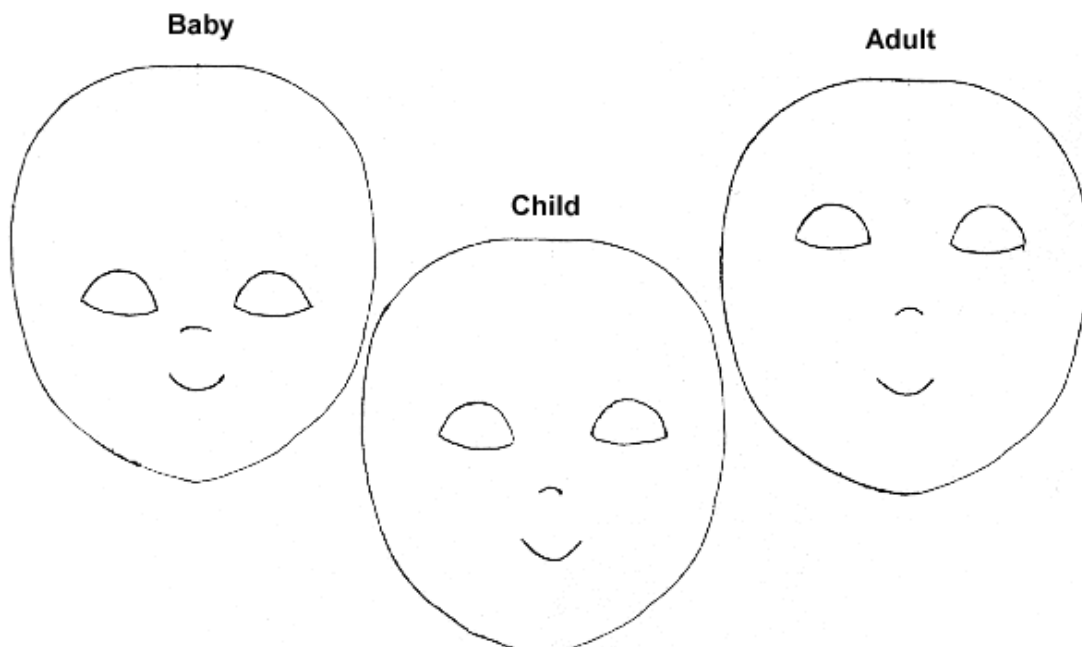
I WILL SHOW YOU MORE ABOUT HOW TO USE THE LABELS AFTER WE DESIGN A FEW FACES.

...First, Another Very Mini Anatomy Lesson...

When designing a baby or child's face, the features are lower on the face than for an adult. The spacing of the features will make a great change in the look of your doll, that's why the labels are so great.

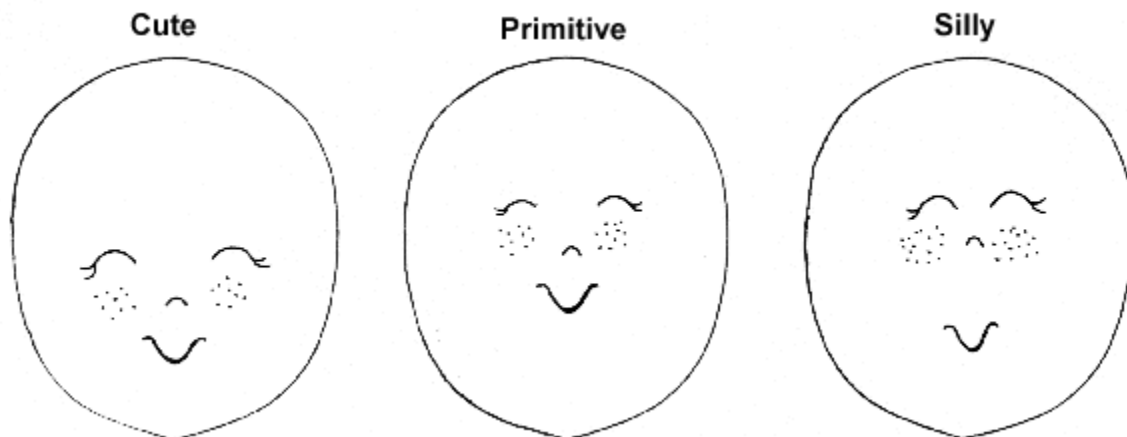
You can move the features around until you get the look you want. You can turn a child doll into a baby just by moving the features down on the face a little. You can even turn a child face into an adult face by moving the features up on the head. (Assuming of course that the body styles will be compatible.)

Feature locations for a...



You can make the same doll look "cute" with lower features, "country/primitive" by raising the features, or silly by widening or narrowing the spaces between the features.

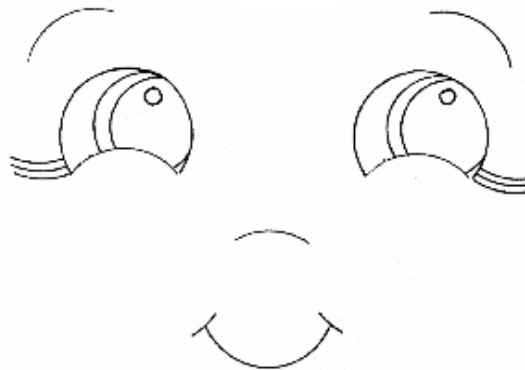
A few feature variations for...



By varying the features location in relation to each other, you can come up with different "looks" with the same set of features...or...you can mix and match features from several designs.

You only need to design one good eye or 1/2 of a good mouth shape because you can cut the mouth from a label folded in half and two eyes from a folded label. You can do a simple curved line nose, pointy line nose, stitched on nose, etc. Whatever is best in your opinion, for the doll you are designing. (Stitched on nose ideas later in this lesson)

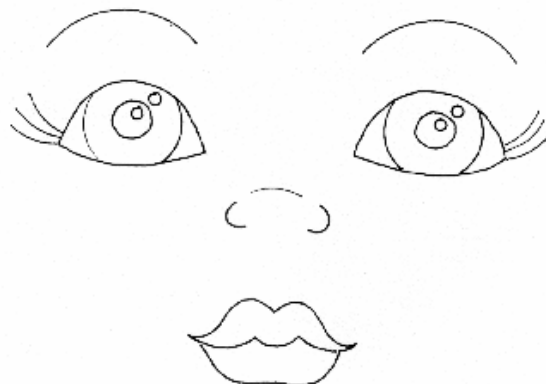
Below is a very simple face designed by using ordinary household objects to draw around. Eye shape from a quarter. Outer iris from a penny. Inner iris, or pupil from a dime. Mouth from a quarter, including the little lines at the sides of the mouth. Eyebrows from a quarter. Eyelashes from a quarter, Nose from a penny. Lifelites just little freehand dots.



This face design can be shrunk down on a copy machine to fit lots of doll sizes.

A more detailed face, designed totally by using drawn around objects and an eye shape and mouth shape from a greeting card. Only 1/2 of the mouth shape was good, so I used the folded label method to get a whole mouth shape so that it matched on both sides. The folded label method is described later in this lesson. I used a folded label for the eye shape too because I like both eyes to match.

Iris from a penny. Pupil from a pencil eraser. Top nose line from a nickel. Little freehand nose sides. Eyelashes from a quarter. Eyebrows from a jar lid.



For primitive/country dolls, the face features are usually very simple lines and dots. With just a dab of practice these simple faces can be done freehand by most anybody.

Some simple Primitive/Country type faces.



Practice designing lots of faces on paper. It is easier to draw the faces big, then shrink them down on a copy machine. There are a lot more things to draw around that are big too, and it's easier to draw around big things. Some more ideas of things to draw around, or places to find features to use.

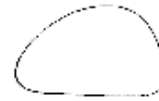
An almond for an eye shape.



The edge of a piece of paper for a pointy nose.



The inside of a scissors handle for an eye shape.



The mouth shape from a coloring book.



A candy conversation heart for a mouth.



A nose shape from a greeting card.



Don't use features from other doll designer's designs for your original doll design. Also don't use all of the features from a coloring book picture, or greeting card face. Just a mouth shape or an eye shape, mixed with other features you have designed yourself.

If you just don't want to do faces yourself, but love doing your own doll designs, you can use the Iron on faces from One and Only Creations. They are available at craft stores, fabric stores and from CR crafts. Be sure to iron them on before you stuff a head.

PRACTICE-PRACTICE-PRACTICE until you are thinking of "Places for Faces" and designing faces in your sleep!



Chapters 6 - Methods of Face Design

Another fantastic face design method is to design from a magazine picture of a real person. First, find a full-face picture of a face you like. This is especially good for adult faces.

Picture below is a model's face from a lady's magazine.



Original color picture.

Put it on a copy machine to make a traceable black and white image.



Copy machine image.

Rub pencil on the back of the copy machine image, put it down on a new piece of paper and draw over the features, which will simplify them so they are useable for a doll face. You can also draw around the face shape, for head size and feature placement reference.

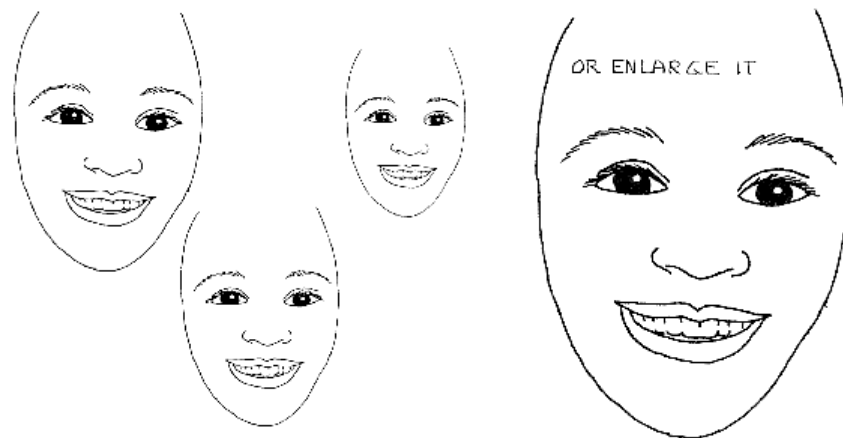


Draw around the features, simplifying them for doll face use (Left).

New face features design (Right).



Now, you can reduce the drawn image as much as you want, so it will fit lots of doll sizes.



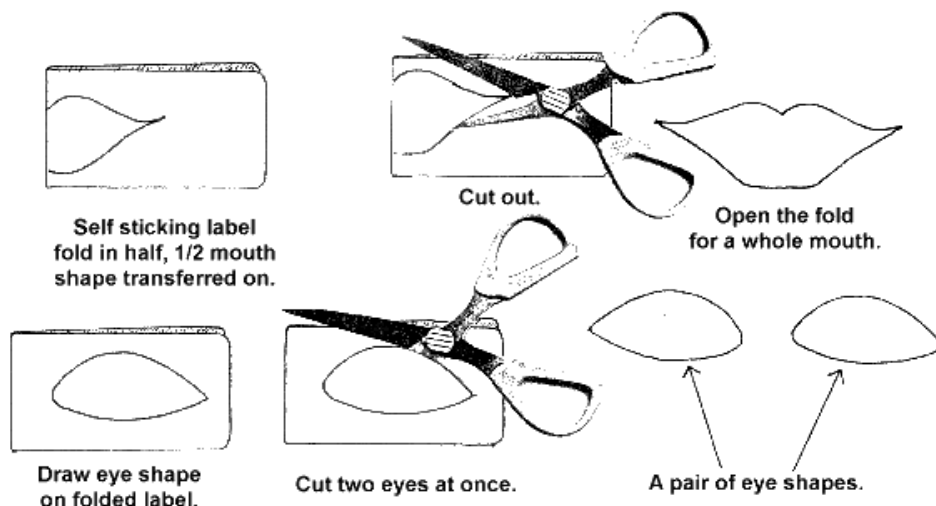
Now you can transfer these features to labels, stick them on your dolls finished, stuffed head and draw around them...or...make your original head pattern with a seam allowance, rather than the sew then cut method. Trace the features onto one head piece before you sew it. Taping the design to a light window, then putting your fabric piece over that to do the tracing is a good way to see the features through the fabric. Of course some of you have a light table, and that is ideal.

Remember to draw **JUST UNDER THE EDGE** of the stick on features, because when you draw **AROUND** something it gets bigger.

NOW FOR SOME BASICS ON USING THE LABELS TO MAKE TEMPLATES TO DRAW AROUND

You will always pencil the backs of your feature designs, then transfer them to a label. You can make a whole mouth, that is perfect on both sides by folding the label in half, then cutting the mouth out on the fold. You can make two matching eye shapes by drawing one eye shape on one side of the label, fold the label in half then cut two matching eye shapes at once.

Remember the needle point method of getting the labels off of the paper backing.



Add the iris's of the eyes on the label if you want to, and actually color them with felt tip markers or crayons before you stick them to your dolls face. Do the same for the mouth. You can get a better pre-look at what your doll will look like with the features you have chosen and designed.

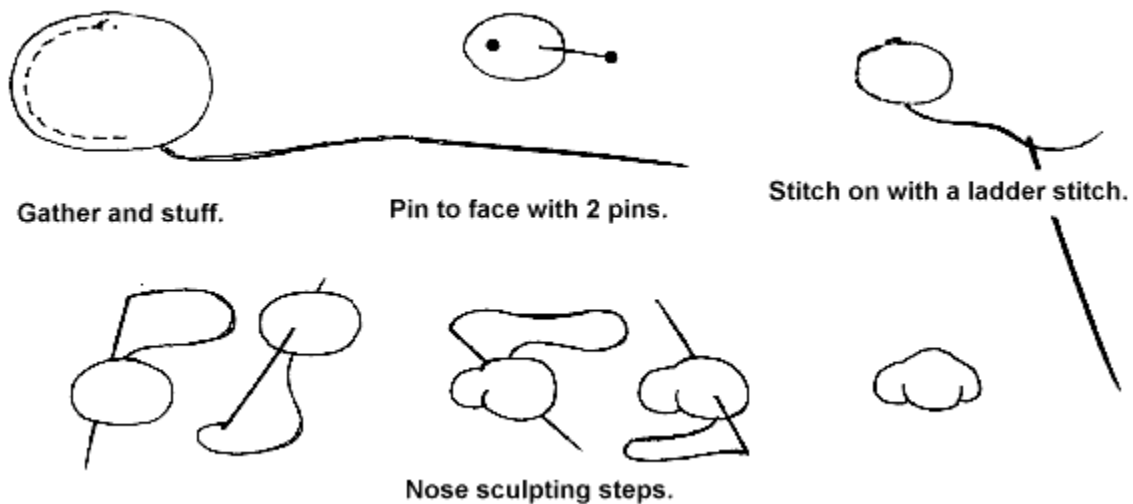
...An embroidery after stuffing hint for those who wish to embroider the faces...

For embroidering after stuffing, you simply put your needle into the stuffed dolls head, back in an area that will be covered by hair. Embroider the feature, then exit back out at the back part of the head.

Remember to add the "life-lites" to the eyes on your finished faces, no matter what medium you use for finishing the faces. Also, for detailed lips it is a good idea to add a little white shine to the center of the bottom lip and a tiny bit of white shine to the top lip on the same side as the "lites" in the eyes. Blush your dolls cheeks with ordinary powdered "people" blush, or even colored pencil or crayons. Crayons and colored pencils make great eye shadow too.

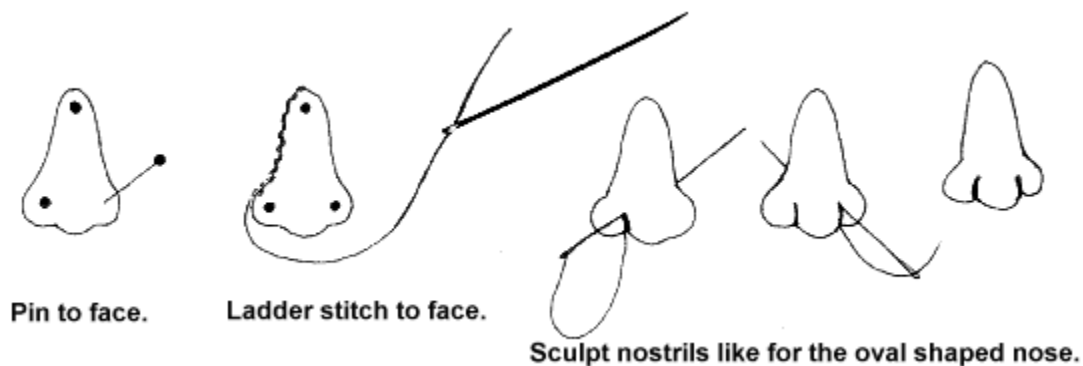
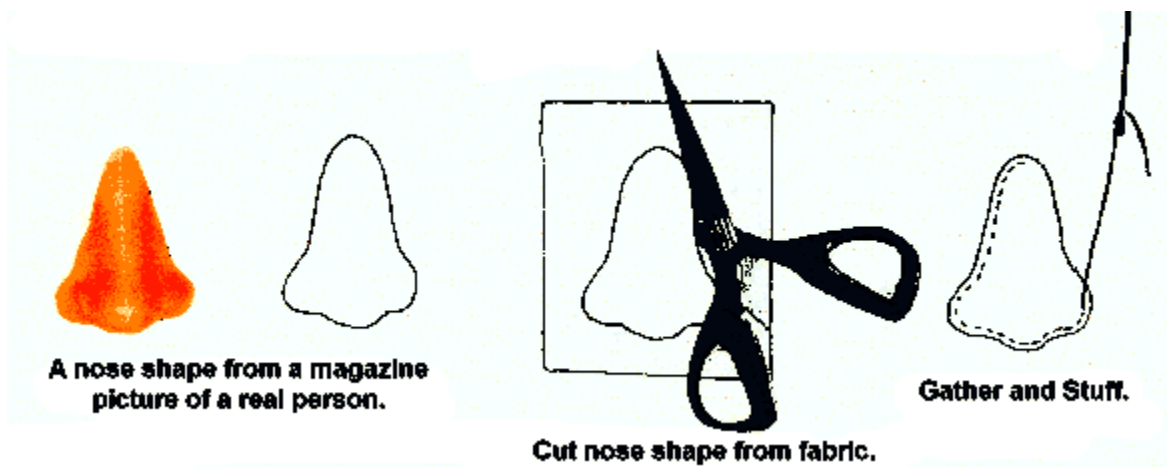
LETS MAKE SOME STITCHED ON NOSES

An oval or circle, gathered around the edge, stuffed, then stitched to your doll's face and then sculpted, or just left un-sculpted makes a nice easy nose for a baby, child, country or clown doll.



A stitched on shaped nose is great for fantasy characters and old people dolls. You can use the nose shape from a magazine picture nose as a pattern. You will need to start out with a bigger shape than your desired finished nose, then gather it all around and stuff it, keeping the shape as you stuff.

Pin it to the face as shown above, then stitch it in place with a ladder stitch. Sculpt the nostrils and you have a fine character nose.



Make the nose really outsized, for a real silly gnome or elf. Make a big red round nose for a clown. Play around with various added on nose shapes to add lots more variety to a simple tab head doll. You will be amazed at how 3 dimensional the head will become.

A note about stitching the noses on with a ladder stitch... To do the ladder stitch for sewing on a nose (or eyelids. IDEA) you take a small stitch in the face right where the nose edge touches the face, then you take a stitch in the back edge of the nose right where it touches. Continue around this way, a stitch in the face-a stitch in the nose edge-a stitch in the face-a stitch in the nose edge, pulling the stitches tight after about 3 or 4 stitches. DON'T try to stitch into the face and nose back at the same time. It usually results in a broken needle and lots of frustration. It will also result in the stitches showing a lot.

Chapters 7 - Hair Style Ideas and Several Hairstyles

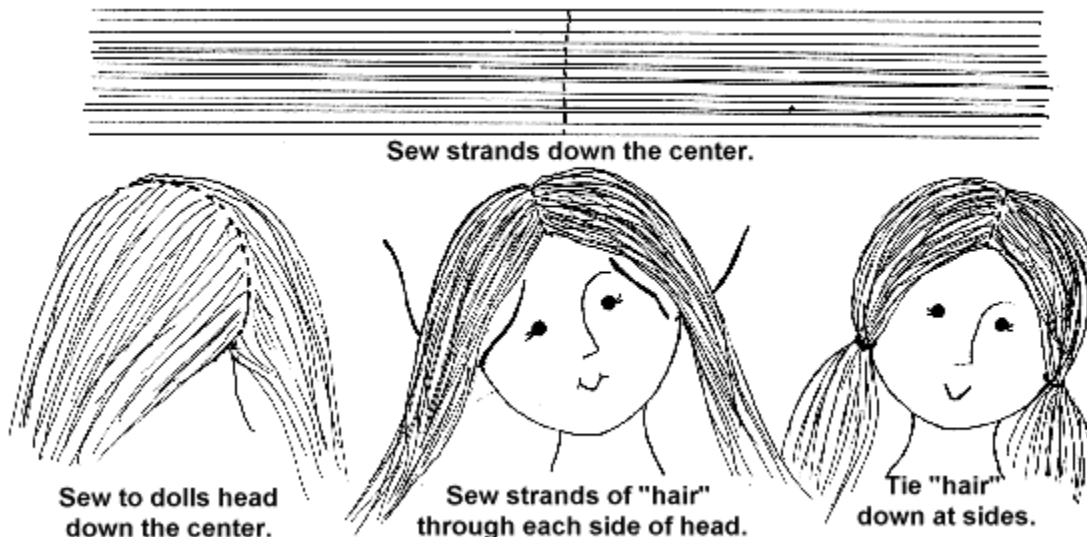
If you have made a few cloth dolls, you have done some hairstyles and some of you are excellent doll hairstylists. Now that you have designed and made your own doll design, you can happily practice, invent and elaborate on hairstyles you have done before, and I hope to give you a few more ideas to make hairstyling fun.

Materials to use for hair for cloth dolls are almost limitless, depending on the type of doll you are making and the way it will be used. Moss and Raffia are not good choices for a play doll and jute and torn rags may not be a good choice for a fancy lady doll. But in the end the choice is up to you.

First I want to list some things that I have used or seen used for hair, and also some things that I just thought up, but haven't used yet.

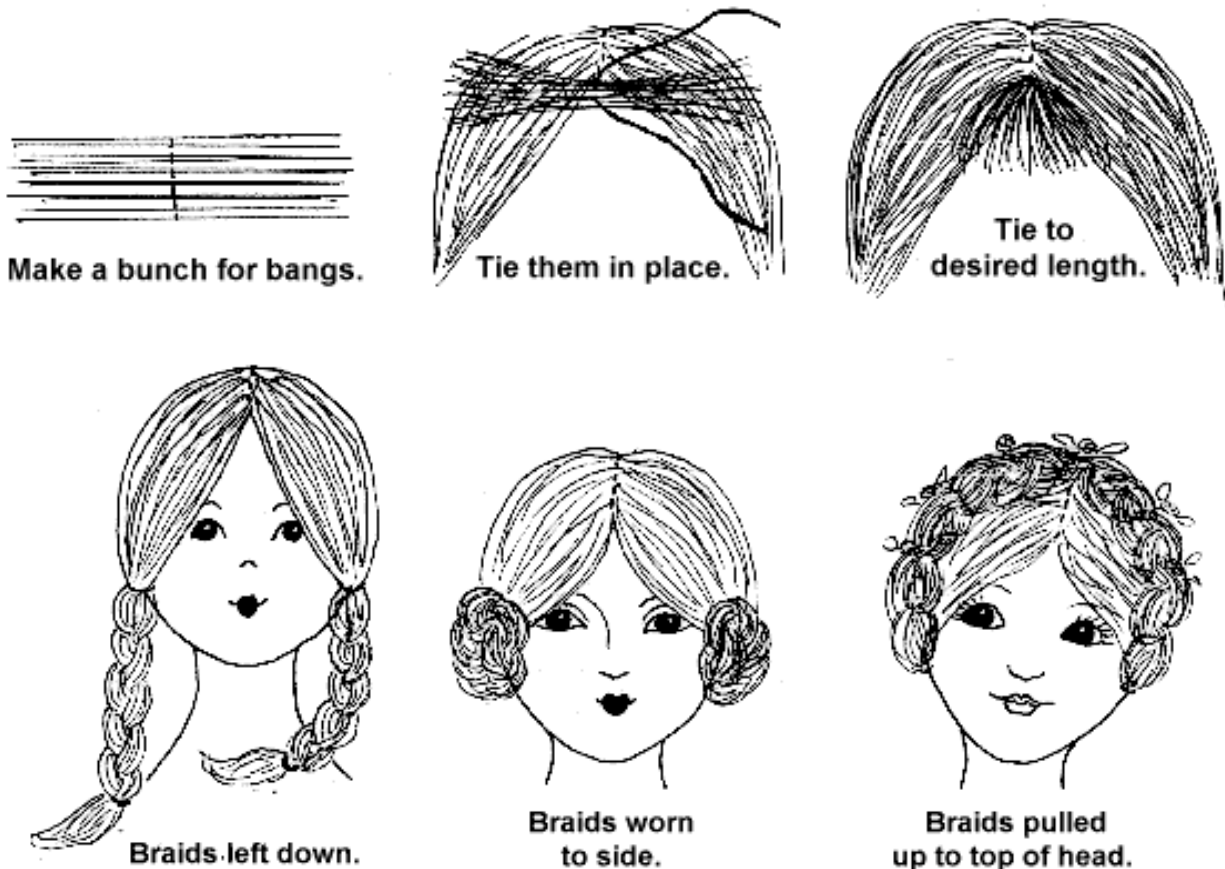
Yarn - embroidery thread - crewel yarn - punch rug yarn - torn cloth - raffia - moss - wool roving - pom poms - bumpy chenille - curly chenille - stringles - mohair - various packaged hair fibers from craft stores like folk wool and wavy hair - fake fur - real fur - weeds - wheat straw - ribbons - feather boas - sewing thread - wood shavings - chenille yarn - human hair - doll wigs - buffalo fur from Yellowstone Park - tiny sea shells - buttons, etc. The list can go on for ever! There is no limit.

The easiest hairstyle is probably low ponytails or braids. You simply pull off enough strands of yarn, thread etc. to cover the part area of your doll's head from the forehead to the nape of the neck. Stitch this bunch of strands down the center. Then sew or glue it to your doll's head, making a center part. Pull the "hair" to each side of the head, and then tie it down with another piece of the "hair" which you have sewn through the head side. You can leave the "hair" in the low ponytails or braid it.



If you wish to add bangs, make another bunch of strands, sew them down the middle, then tie them at the center of the head right where the part is in front, just like you tied the sides of the “hair” down. Trim the bangs to the length you want.

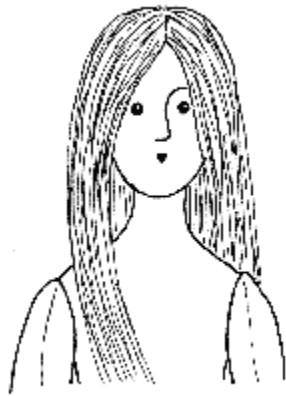
When made from yarn or embroidery thread, this is a great, quick and durable hairstyle for a play doll, or country look doll. If it is made from very fine fibers like silk thread or real or synthetic mohair it makes a nice hairstyle for an Indian if you braid it. You can also wind the braids around at the sides, tacking them down as you wind. This results in a cute Heidi or Dutch look. Pull the braids up and criss cross them at the top of the head, tack them in place and wind tiny flowers through and you have a pretty, fancy “do”.



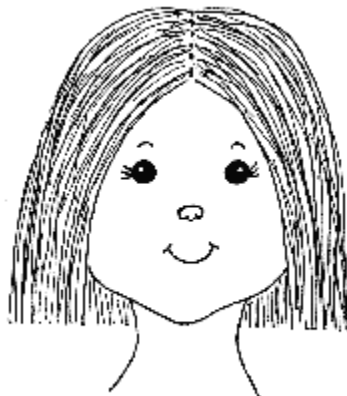
This same simple center part style can also be left long, or cut short, and be left down rather than braided or pony-tailed. Stop the center part at the crown of the doll's head. “Finger comb” it down evenly, all around the head, then lift small sections at a time, and glue the under layer to the dolls head. The “Hair” will need to be trimmed nice and even after the glue dries. This hairstyle is not real durable, if the doll is going to a child who drags her dolls around by the hair.

If left very long it makes a beautiful long hairdo for princesses, Rapunzel, fairies, and little girls. There is just something about long hair on a doll that is sort of magical to me.

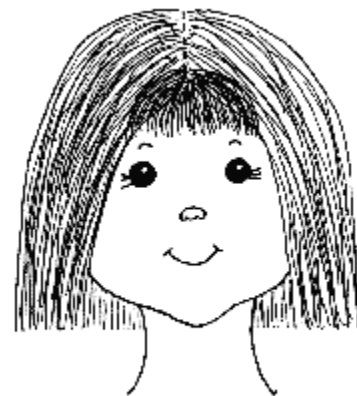
If you cut this hairdo into a “Bob” it makes a great Flapper hairdo, or a cute little girl hairdo. You can of course add bangs too if you wish.



A long center part hairdo.



A short bobbed hairdo.



Bangs added to the Bobbed hairdo.

Another addition to the above basic hanging down hairdos would be side pull-ups. Tie a small bunch of the “hair” yarn etc. into the head at each side, at about eye-level. These bunches need to be the same length as the original hair strands. Sew a strand of the yarn etc. into the head just below the crown. Now pull the side strands up to the crown and tie them down. This makes another little girl style. It also makes the long or short hanging down hair more playable. The little “doll wreckers” can drag the doll around by the ponytail at the crown.



“Hair” tied at side.

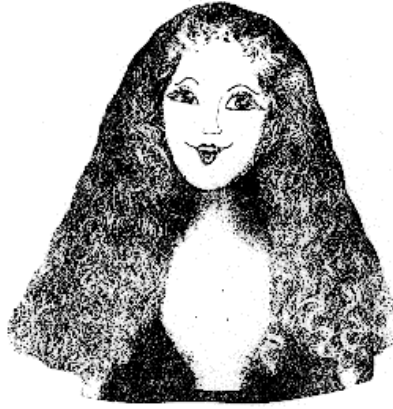


“Hair” tied at the crown.



Bangs added if desired.

Any of the above hairstyles can be made from a variety of materials, each giving the doll an entirely different look. Fine, soft, synthetic fibers that come packaged in about 1 yard hanks can be done in the hairdos described above, and they are beautiful for display type, art dolls. This packaged “hair” comes straight and curly. It also comes in braids that you unbraid to get “crimped look” hair.



Unbraided, synthetic fiber hair.



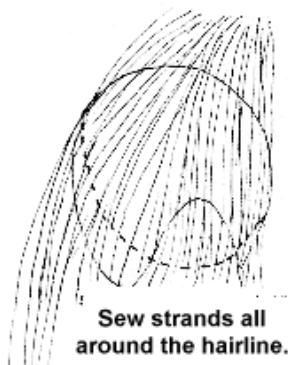
Straight, synthetic fiber hair.

A single pony tail hairdo is also easy to make from a variety of materials. Simply machine sew down the center of enough long strands to wrap all the way around your doll's head. Place the "hair" around your doll's head with the stitched part along the doll's hairline all around the head. Half of the "hair" will be hanging down over the doll's face and down the back, and the other half will be going up toward the top of the head while you sew it on. Sew the "hair" down to the hairline along the machine stitching, and then finger comb it all back into a high ponytail. Tie or rubber band the ponytail in place.

This is a great, easy to do hairstyle for a 50s look doll. It is also darling on a child doll and is a good play doll hairdo.

You can make this simple ponytail hairdo very elegant by curling strands around your finger or a pencil, and then one at a time, arranging the sausage curls around the head and stitching or hair pinning them in place.

Enough strands sewn down the center by machine to wrap all the way around your doll's head. They need to be long enough to make a nice long ponytail.



Sew strands all around the hairline.



Pull up into a ponytail.

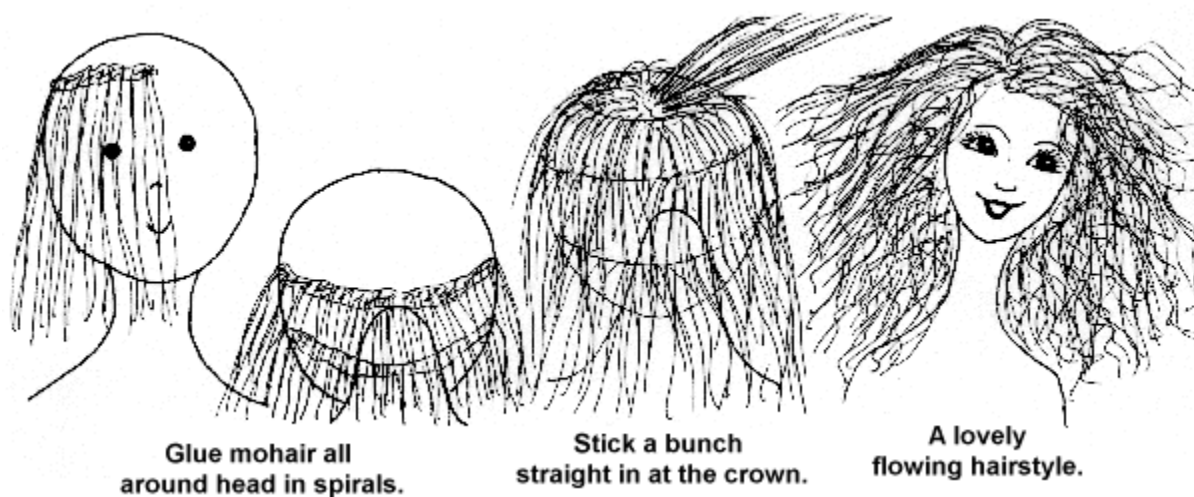


Make an elegant hairdo.

Real mohair fiber is the choice of many cloth dollmakers. It comes in lots of lengths, and is wonderfully wavy. It is very fine so it is in scale with the small size of a doll. I personally, don't like the wefted mohair on small dolls. It makes thick, hard to cover places. I like to glue the unwefted mohair right to my doll's head, using a "Cool" glue gun. Glue it all around the head in a spiral design, spreading it out on the glue. When you get to the crown, put a bunch of the mohair right straight into a dab of glue. The whole head will be fully covered and the mohair can be carefully brushed and styled.

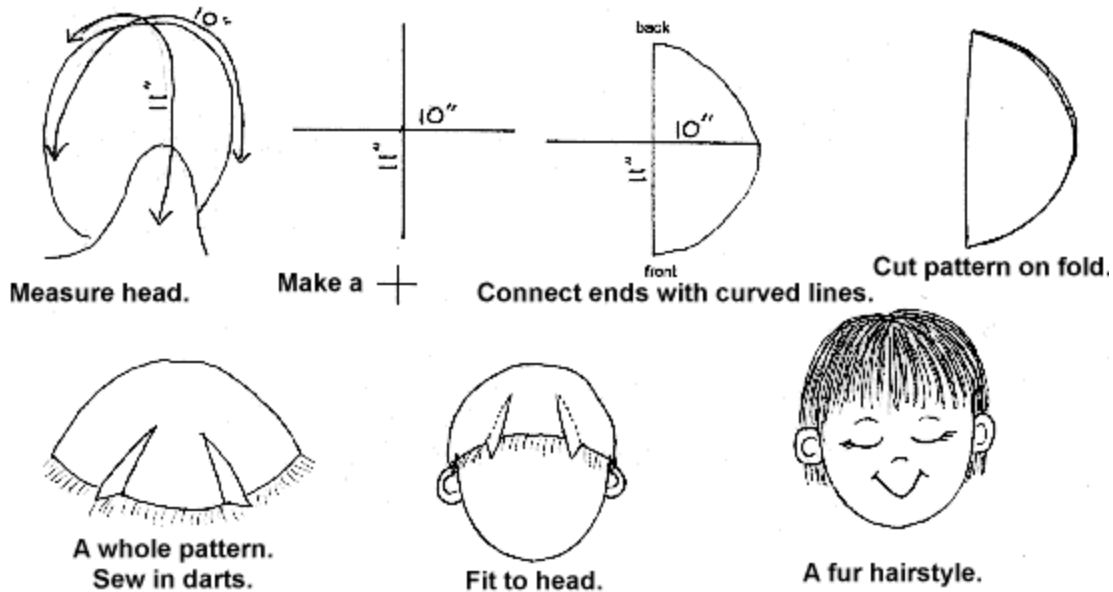
On small dolls, this type of mohair hairstyle will seem long and ethereal. Perfect for fairies and fantasy creations. The mohair will fluff out and flow very softly.

Tame it into the style you want with hairspray. I use this method on my polymer clay "one of a kinds" too.



Fur, both real and fake makes nice hair for boys and babies. It also made nice hair for the undressed elf on the introduction page of the class. His hair is made from an old red fox collar that I bought at a thrift store.

To make a fur wig, measure your dolls head from ear to ear. Then measure from the forehead hairline to the nape of the neck. Draw a \perp with those measurements. Connect the ends of the with curved lines. You only need to draw two curved lines, because you need to cut the wig pattern on the fold so both sides match. Draw around the opened wig pattern on the back of your fur. Cut the fur wig out carefully, cutting only the backing, NOT the fur. Sew darts in the fur backing, first, one on each side of the center front, then one on each side of the center back. Try the wig on your doll and add more darts as needed to make the wig fit. Glue or sew the wig to your doll's head.



With the hairstyles you have done before on other dolls, and now these added ideas for hairstyles you should be able to make a different hairstyle for dozens of different dolls. Remember that simply changing the material you use for the hair, say from torn muslin to long synthetic fiber, you can change the whole look of a doll.

For added beauty and interest add bows, flowers, beads etc. to the hairstyles you make on your dolls.

Of course don't forget real doll wigs for your dolls. I use them a lot for special dolls. Real doll wigs are not very playable, so don't use them for a doll that will be played with a lot.



Have fun as your doll's hairstylist, and experiment with different fibers for different looks.

Judi Ward
Judi's Dolls
<http://JudisDolls.com>