

Design Your Own Cloth Doll Class – Chapters 8 and 9

©1995 with additions copyrighted 1996-2019

Taught by Judi Ward of Judi's Dolls

Chapters 8 - Designing Basic Clothing Patterns

Hopefully you now have several dolls with a variety of faces and hairstyles waiting to be dressed. Are they calling to you to be dressed in certain styles and colors? Are they begging to be wild and crazy? Or quiet and subdued? Do you have a doll that started out to be a girl, but now it's demanding to be a boy! With cloth dolls this sometimes happens. They take on a life of their own, and you have little control over it once they make up their minds! Designing and making clothes for your dolls can be such a joy, and often simple designs show off your doll to the best advantage.

To get a “feel” for clothing shapes I recommend that the first thing to do is some research through the patterns you have and through books on doll clothes like **“Dressing Twentieth Century Dolls”** by **Johanna Gast Anderton** or **The Collectors Book of Doll Clothes** by **Dorothy, Elizabeth and Evelyn Coleman**. These books are probably available at your library, or they can be ordered through inter library loan, if your branch doesn't have them. Look at the shapes that clothing pieces are designed from. Most pieces are variations on rectangles, squares and circles. Also look through the patterns you have, to see the many ways doll clothes are designed and constructed. This research will result in finding many basic pattern shapes, to help demystify clothing design and construction.

You don't need a lot of basic clothing pattern designs to make a lot of doll clothing. A basic shirt pattern can be a pajama top, a jacket, a night shirt etc. One basic dress pattern can be made into everything from a little girls school dress to a wedding gown with just a few changes. A dress skirt can be a regular skirt with the addition of a waistband. A pair of pants can be pantaloons, shorts, pajama bottoms, knickers, with the addition of knee bands, leggings etc. by just making them wider or narrower, longer or shorter.

Experiment!! It's fun and a fantastic creative outlet.

This chapter isn't going to be a sewing lesson, except for some hints to make doll clothes easier to make. If you are ready to want to design a doll and the clothes yourself, you have probably made quite a few dolls already and have sewing and finishing methods that you prefer.

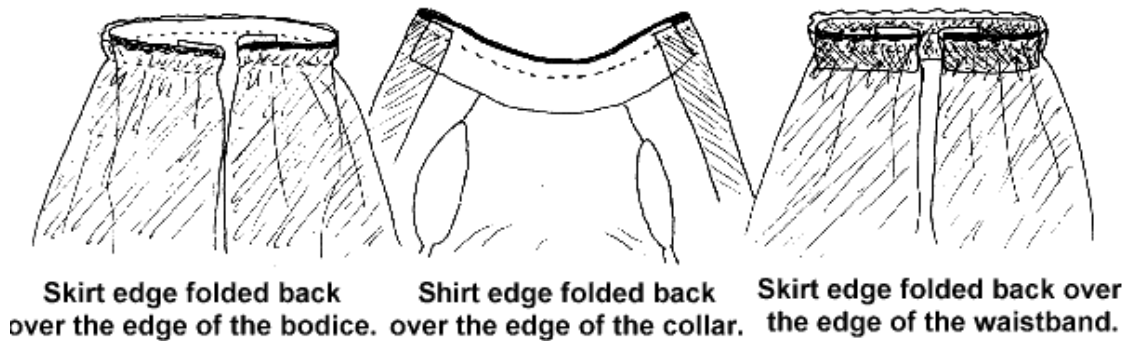
My “Judi's Dolls” patterns have lots of innovative sewing methods that give your doll clothes a very professional, quality look, since I prefer clothing that is made more like real people clothes and that can be removed.

Some dollmakers prefer clothes that are sewn onto the doll. The choice is yours. It is your doll design and your doll clothes design. Do the finishing the way you prefer. There is no one way, that is the only “right” way.

Experiment with different ideas and adapt your designs to the way that the dolls you make will be used. You need to use sturdy, washable fabrics and methods for a play doll, but you can use fine fabrics and even glue for a strictly “look at “ doll.

One method that I highly advocate is making dress bodices lined. It is much easier to finish the neckline when you can simply sew two bodices together down the backs and around the neck. The “clip, turn to the inside then top stitch” method is hard to do and produces a weak neckline area. Of course if you have designed a primitive type doll you may want the torn, unfinished look.

The method I recommend for concealing raw edges where a shirt meets a collar or where a skirt meets a bodice, is to fold the skirt ends back around the edge of the bodice or the shirt edge back around the edge of the collar. This also holds true for skirts with a waistband. Fold the skirt ends around the ends of the waistband. When you pull the skirt/shirt etc. down to be right side out the edges will be finished and concealed in the turned back part.

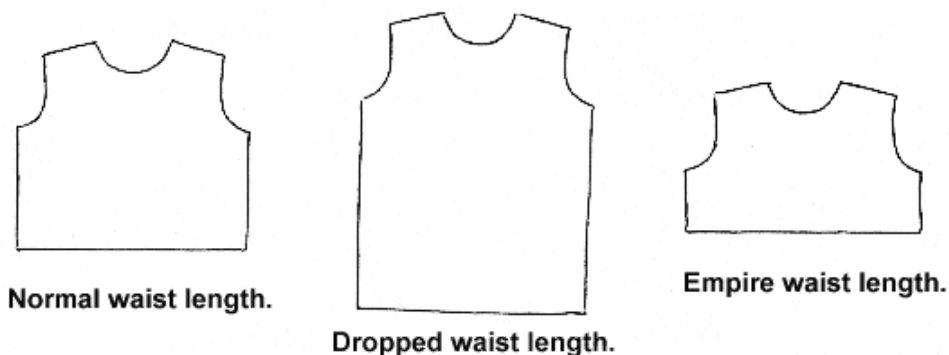


This “turned back placket” method makes much nicer finished ends on your doll clothes.

Designing you own doll clothes is really very simple. Before we start, lets look at some more possibilities from a few basic designs.

FOR EXAMPLE

A basic waisted dress bodice pattern can be made into a high waisted dress by simply shortening the bodice. It can be a dropped waist dress by lengthening the bodice. The high waisted version can be a nightgown by lengthening the skirt and making the gown from “nighty” fabric.



The dress bodice can be turned into a shirt by planning the opening down the front rather than the back. A shirt collar is just a length of fabric twice the width that you want the collar to be by the length of the neck opening, folded in half lengthwise. I will show you how to make some other collar styles later. Short sleeves can be lengthened, long sleeves shortened; any length of sleeve can be made wider to be a full gathered sleeve. Skirt lengths can be adjusted from tu-tu length to evening gown length.

Long pants can be shortened to be shorts. Widen the pants and add lace and elastic to the bottoms of the leg openings to be pantaloons, either knee length or ankle length. Shorten the wide pants to hip length and add lace and elastic to the leg openings to be bloomers or the bottom part of a sun-suit. By adding a bib and straps, bloomers, pants or shorts are quickly changed into sunsuits or overalls.

Full gathered skirts are simply a length of fabric at least four times the waist measurement by the length desired plus hem allowance. The fullness of the skirt can of course be more than four times the waist measurement, but, sometimes if there is too much fabric to be gathered onto a small waist, you won't be able to get it all on. Sew on as much of it as you can then cut the excess off. Another way, one of my favorites, to get lots of fullness in a skirt and still be able to attach it to a very tiny waisted bodice, is to make the skirt a full circle with a hole cut out for the waist edge.

Most doll clothes are made from only a few basic shapes, which I will show you how to create. You will use the doll/dolls that you made to make clothes patterns to fit the doll you designed. Since this doll is a flatter doll than one with a four or more piece body we can use a simpler pants design. Pants for a more shapely body design will need to have a four-piece design. At the end of this lesson I will show the more adventurous designers how the 4-piece design for pants looks, and how you can make that type of pattern for your dolls if desired. You have probably seen and used that pants design from other patterns.

All pattern pieces need to match on both sides, so after you get the basic shape drawn you will need to fold the paper in half down the center of the bodice or pants or tunic, and cut your pattern out that way.

I will illustrate the basic pattern pieces used to dress all of the dolls pictured. As you can see it takes very few basic pieces to make an endless variety of clothes. The methods used to make these pieces are much the same as the methods you used to design your doll.

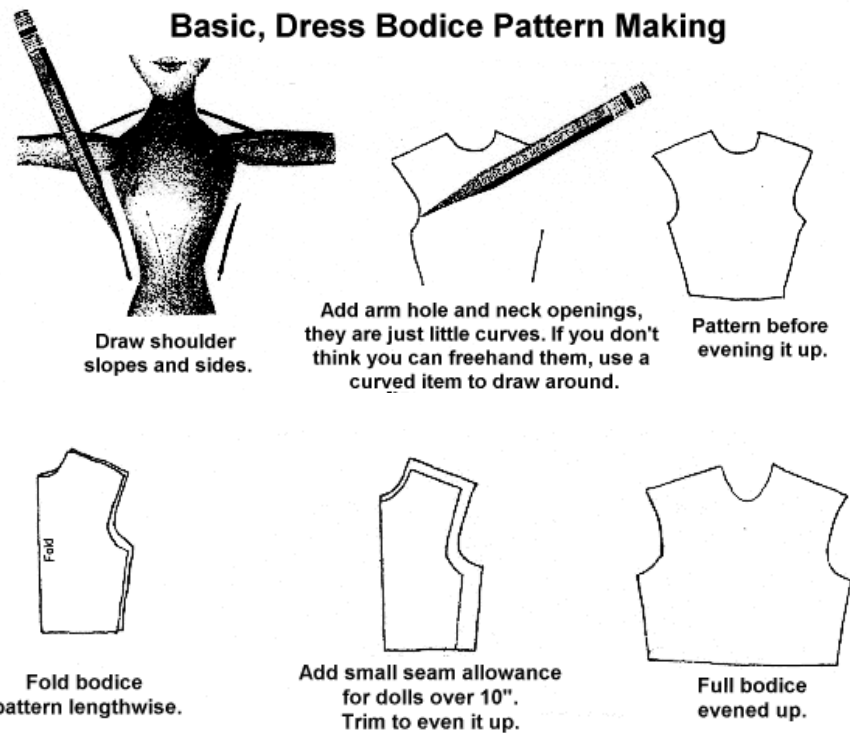
I am going to illustrate the method by drawing around a reduced size copy machine copy of a doll I designed using the methods you have been learning. You will use your actual doll/dolls to draw around.

This pretty doll was shown nude and hairless on the class registration page. She will appear at the end of this lesson in a lovely gown and wide brimmed picture hat.

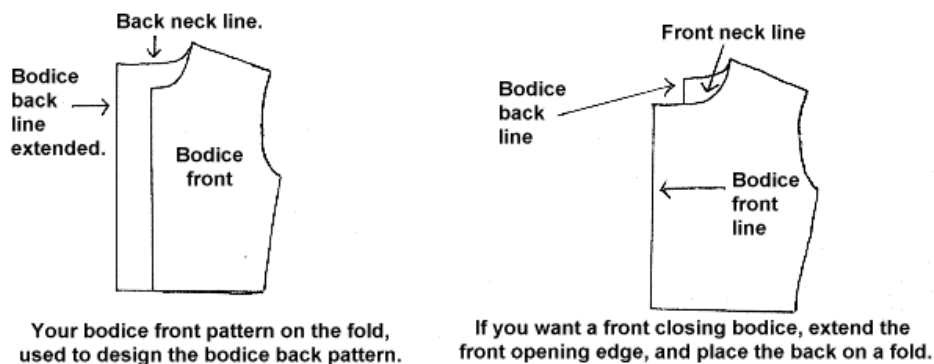
When drawing around your doll to make most patterns, be sure to hold the pencil **STRAIGHT UP AND DOWN**. You may add small seam allowances for the **basic bodice**, but for a small doll, under 10" you usually don't need to for the **bodice**. By holding your pencil truly **STRAIGHT UP AND DOWN** the seam allowance is added simply by the width of the pencil. For larger dolls add about 1/4" extra for seam allowances, when you cut your rough patterns on the fold to even them out.

If you have designed a very large doll, even larger seam allowances (1/2") can be added. In my case, it seems that the larger the clothes I am making, the larger I want the seam allowances to be.

NOTE...For some of the patterns I will direct you to draw a little ways away from the doll, not right along the body

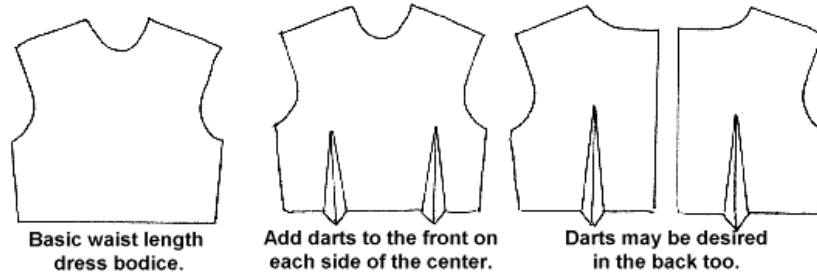


Now, you can use the basic bodice front pattern to make **THE BODICE BACK PATTERN**. The neckline on the back pattern is usually a little higher than on the front. You need to add about 1/2" to the back center width for a doll under 10" and about 3/4" to the back center width for a doll over 13". This extra width is for the back overlap, and where you will sew snaps, buttons, Velcro etc. or just overlap the back and sew it shut.

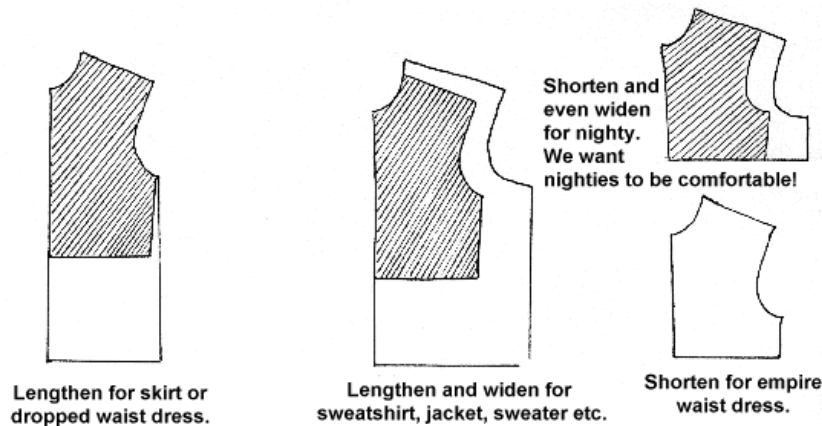


Now, you have the basic bodice front and back patterns with the closings designed for either the front or back, You can lengthen, shorten and widen this basic pattern to make dress bodices, nightgown bodices, button front shirts, back closing shirts, sweaters, sweatshirts, jackets, robes etc.

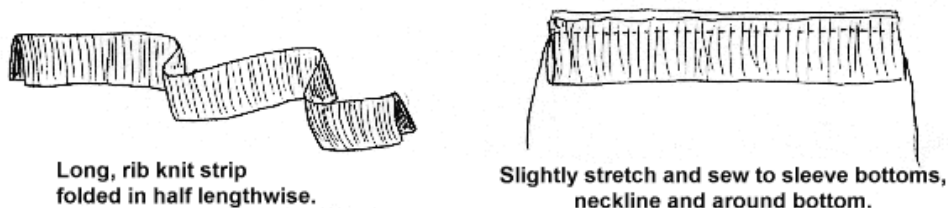
You may want or need to add waist darts to a fitted dress bodice, so the waist fits nice and snug. This is especially true for a lady doll with a tiny waist.



You will have to use your own judgment as to how much width and/or length you want to add to the basic bodice to make patterns for other types of tops. As an example. For a sweatshirt you would want to add perhaps 1/2" width to each side seam, for a doll under 10". The length would look best at about hip length. You can always cut pieces from good quality paper toweling and baste or tape the toweling together for a fitting. Paper toweling makes the cheapest and best fitting material.



Sweatshirts (sweatpants too) and sweaters will need to have rib knit cuffs, necklines and bottoms. Simply cut a strip of rib knit (or sweater knit) twice as wide as you want the rib knit parts to be plus seam allowance, by the length needed to sew onto all of the parts needing rib knit. Example. 2" in length for each wrist edge, 4" for the neck, and 7" for bottom, for a total of 13". Fold the strip in half lengthwise and slightly stretch it as you sew it in place.



SLEEVE PATTERN MAKING

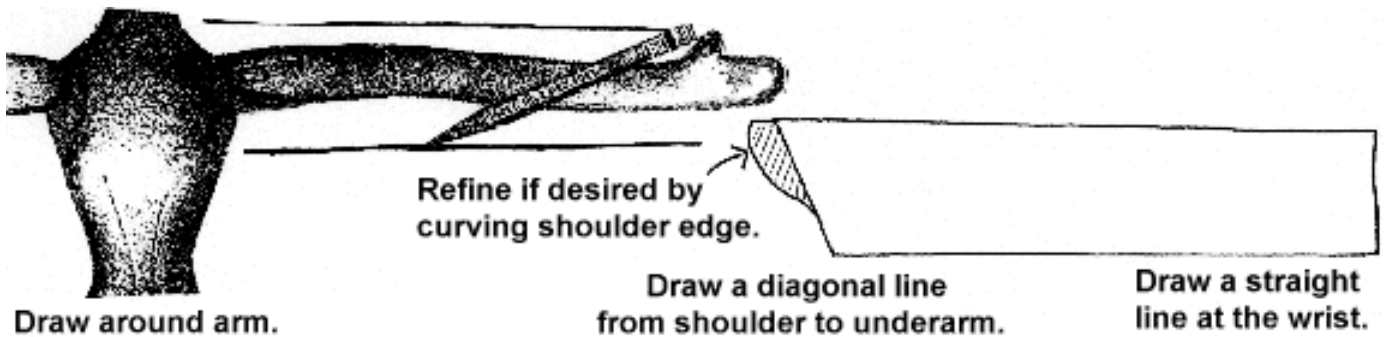
You will use your dolls arm for sleeve designing. A sleeve is just a rectangle or square with a curvy top edge. Be sure to plan for hemming, or lace and elastic, or rib knit cuffs. If you have made a jointed doll, you will have to pull the arm straight out and hold it while you draw around it. You may need to have someone hold it down for you. If you have made a doll with stitched on arms, just place the arm straight out at the dolls sides and it will stay fine for you to draw around it. Before we design the sleeves, I want to illustrate the best way to put elastic on doll clothes.



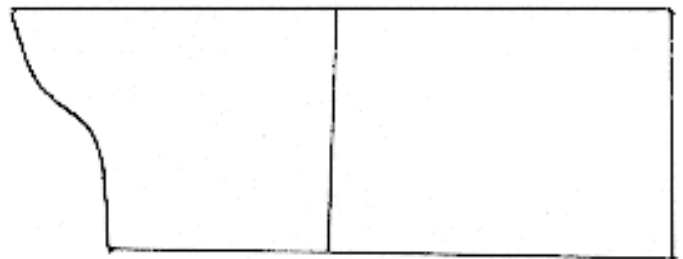
Anchor stitch 1/8" wide elastic at one end. Hold the anchor-stitched end, then stretch the elastic as you Zig-Zag stitch over it.

The Zig-Zag stitch needs to be wide enough to go all the way across the stretched elastic, not into it. You will be making a "thread casing". You can gather up a lot of sleeve fullness this way. When you have adjusted the fullness to your liking, anchor stitch the end, to keep the elastic from slipping back through the "thread casing".

Draw around the arm as illustrated, about 1/4" away from the arm. Draw a diagonal line from the shoulder top to the line under the arm. Draw a straight line at the wrist. This makes a narrow, straight sleeve pattern. You will add wrist hem allowances, depending on the finish you plan to do at the wrists.

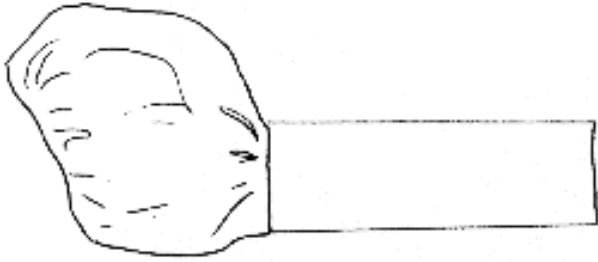


Make sleeve patterns for short or long sleeves.

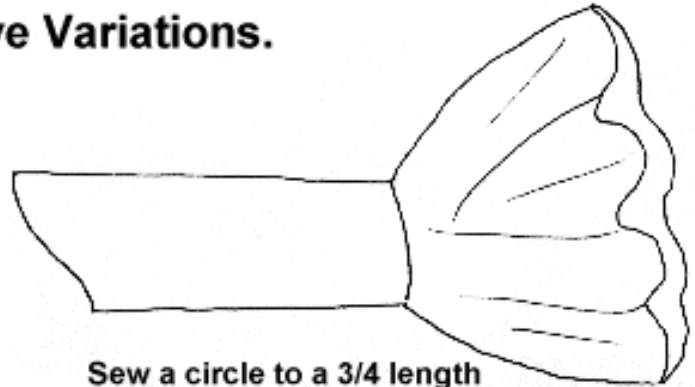


Widen sleeve patterns for puffy sleeves.

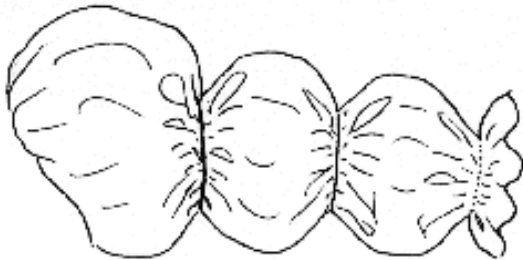
Some Fun Sleeve Variations.



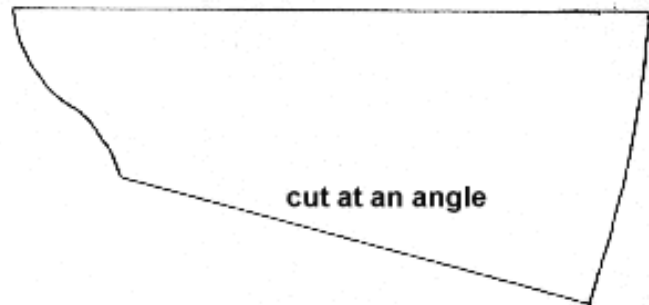
Sew a short puffy sleeve top to a narrow bottom for a pretty sleeve.



Sew a circle to a 3/4 length sleeve to get a 60s look sleeve.



Gather the sleeves in several places all the way up for a romantic sleeve.



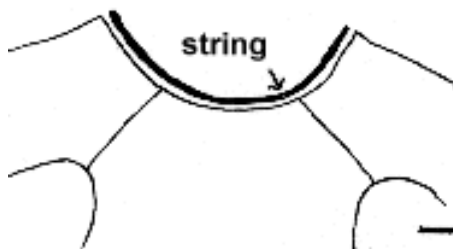
cut at an angle

Cut the seam edge of your sleeve pattern at an angle to make a robe sleeve.

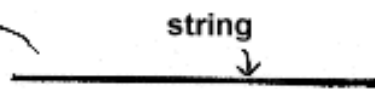
To make a shirt collar pattern, sew the shoulder seams of the shirt you are making, from the pattern you designed previously. Measure the neck opening with a piece of string. Lay that piece of string down on a piece of paper and draw a straight line along it. Designers note...I use string for measurements a lot, because it is more flexible than a tape measure for small doll "stuff".

Decide how wide you want your collar to be, and draw lines at each end, that long, plus 1/4" seam allowance for sewing the collar to the shirt.

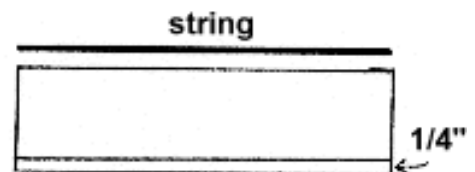
Connect the ends. This is a collar pattern that has 1/2" end seam allowances on it. The wide seam allowances make it easier to sew the little collar ends. You will trim them after sewing.



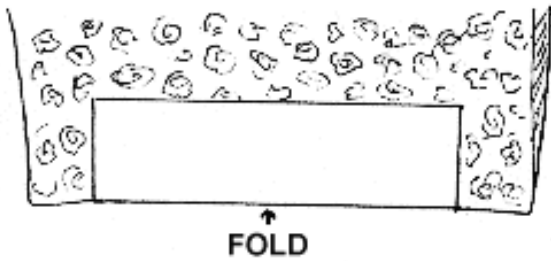
Shoulder seams of shirt sewn.



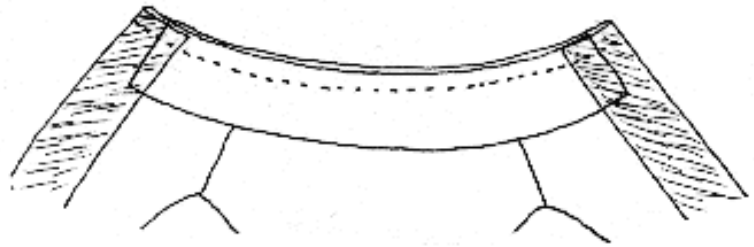
String measurement for the collar length.



Draw collar pattern, the width you want it to be, plus 1/4".



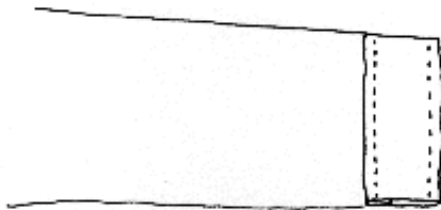
The collar will be cut on the fold of your fabric.



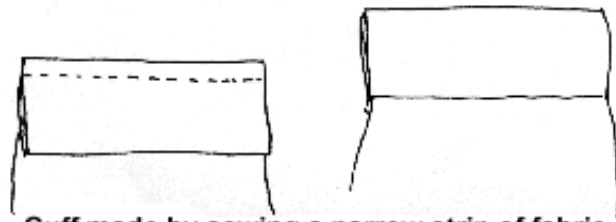
See below.

Stretch the neck edge of your shirt a little as you sew the collar to the shirt. Remember to fold the front extensions back around the collar edge. When you turn the extensions to the inside, the front of your shirt will be nicely finished. Note, in the drawing, that the collar is a little shorter than the full neck length. That is so the front can be overlapped, without overlapping the actual collar. This is achieved by the slight stretching you did of the shirt neck as you sewed the collar on.

You can make a “mock” sleeve cuff on a long sleeved shirt by simply turning the hem at the wrist to the right side, and topstitching. Of course, be sure you have allowed enough of a hem at the wrist to do this. Or you can sew a little strip of fabric, folded lengthwise to the wrist edge of the sleeves, to make a cuff.



“Mock” cuff made by turning the hem to the right side.



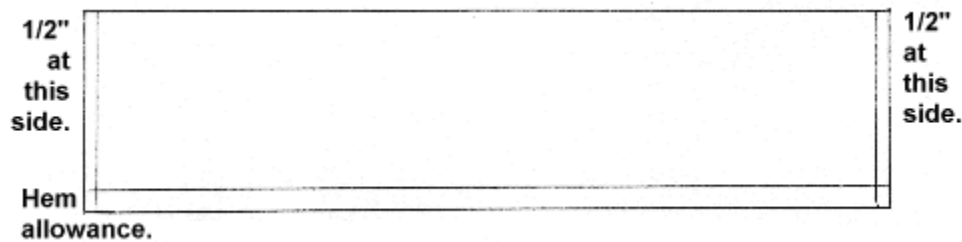
Cuff made by sewing a narrow strip of fabric, folded lengthwise, to the sleeve wrist.

Now think about what a basic shirt pattern can be turned into. Make it wider and longer for a nightshirt. How cute in red flannel, on a man doll, with a long pointy nightcap. How about a fat man doll, and turn him into Santa? Shorten the shirt, add fur collar and cuffs, for a trendy looking jacket to go with a straight skirt (we’ll design the skirt later) for a Jackie Onassis look. Add rib knit collar, cuffs and bottom to a shortened, widened shirt, and then a felt letter to make a letterman’s jacket. Think like a designer. Ask yourself, what can I do for variety using this basic shirt as a jumping off point? Be an observer of clothing in magazines. You will suddenly realize that most clothing is made from just a few basics.

SKIRT PATTERN MAKING

Skirts can be sewn to bodices or add a waistband to make a regular skirt.

THE BASIC FULL SKIRT, is just a length of fabric at least 4 times the waist measurement. Allow about 1/2" at each end for the turned back placket. For a very slim waisted doll, very lightweight fabrics gather and sew to the bodice waist, or skirt waistband, much easier for this type of skirt. If the fabric is too heavy it will "be hard to sew on". The only measurements you need are the length of the desired skirt plus hem, and the 4 times waist measurement. You can make the skirt fuller by using more than 4 times waist measurement, but the "hard to sew on" rule often applies, depending on the weight of your fabric.



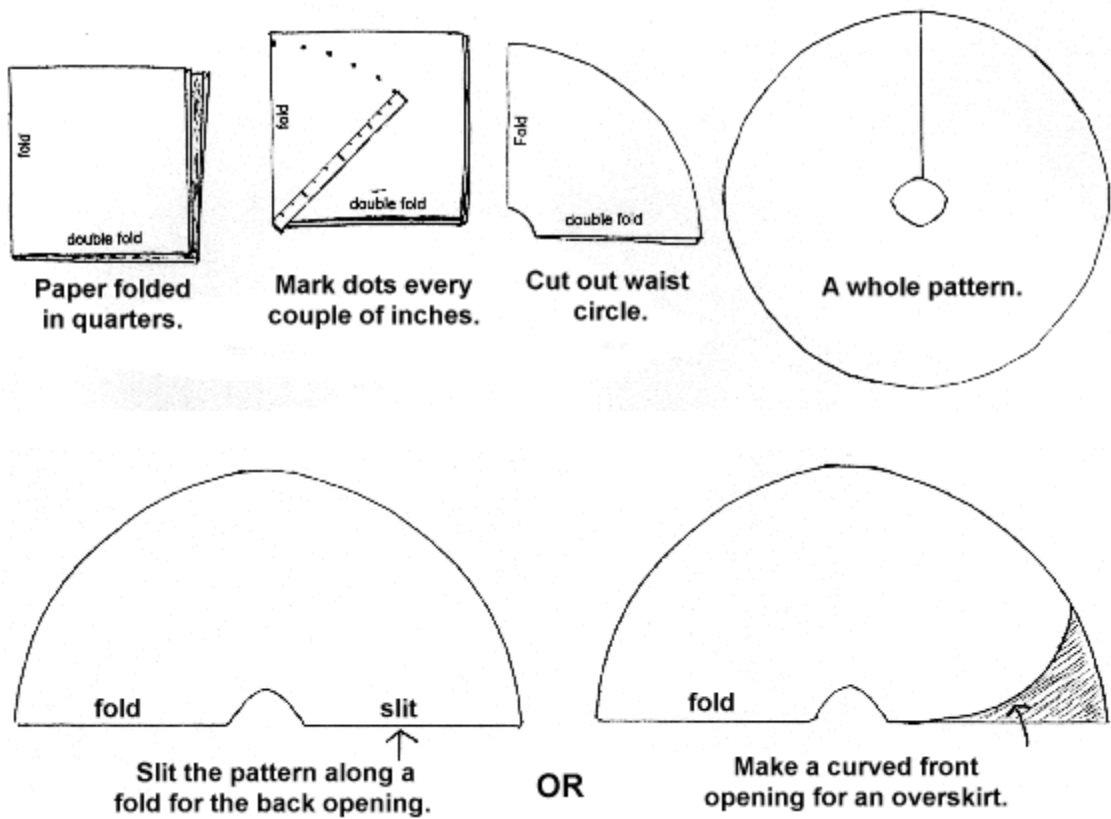
Desired length plus hem allowance, by 4 times waist measurement plus 1/2" at each end for the turned back placket.

Refer back to the illustration of the turned back placket at the beginning of this chapter for how to best finish the back edges of skirts where they sew to waistbands or bodices.

A very easy, full skirt, that will sew easily to the tiniest waist is the full circle skirt. Sometimes you can draw around something round like a plate to make a pattern for a full circle skirt. Sometimes you will need to make the pattern by folding a big piece of paper (freezer paper) in quarters. Measure from your doll's waist to the length you want the skirt to be plus 1". For the illustration below I will use 12" as this measurement. Put one end of a ruler at the point of the fold, with the ruler along one edge of the paper. Mark a dot at the other end of the ruler. Move the ruler a couple inches from the first dot and make another dot. Always keep one end of the ruler at the point of the fold. Continue making dots every couple of inches. You will have dots marked in a fan shape. Connect the dots, with slightly curved lines. Cut the circle pattern out. Now cut a small 1/4 circle out of the pointed end. This will be the waist edge. Open the paper pattern, cut one fold apart, and try it around your doll's waist. If it is too small, refold the pattern and cut it a little bigger, not more than 1/4" at a time. If your first cut out made a waist edge that was too big for your doll's waist, you can gather it to fit. Remember to have the skirt waist big enough to allow for the turned back placket.

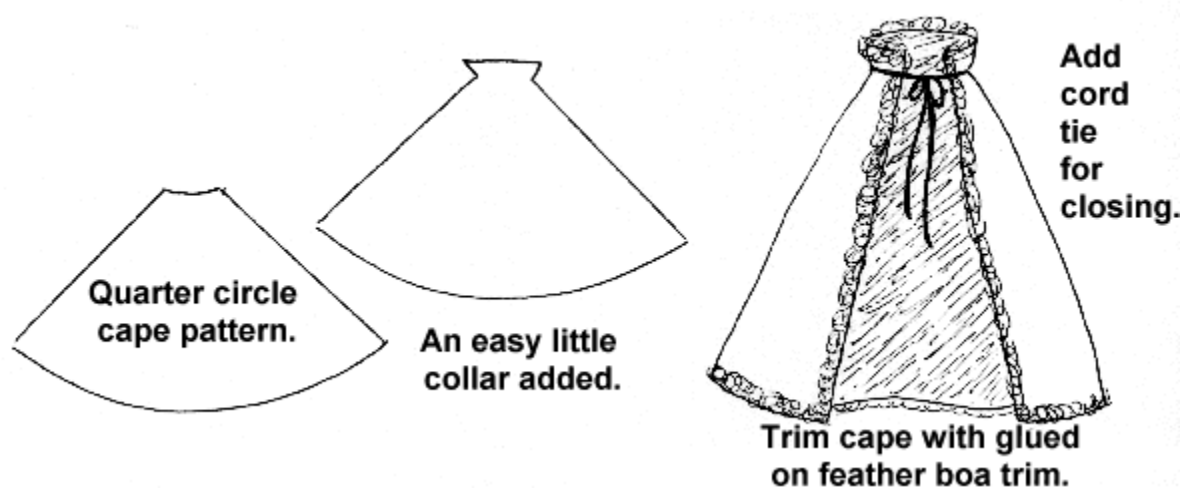
This type of skirt makes beautiful formal gowns. The doll in the lavender gown at the end of this lesson is dressed in a gown made from 2 full circles. The top circle is cut in a curve at the front. A ribbon waistband was added and it is tied on in the front.

This type of skirt also makes cool "Poodle Skirts" if you make the skirt from felt.



A half circle makes a lovely skirt too. Be sure to re-cut the waist edge to fit, and adjust the length. A quarter circle makes a nice a-line skirt. Re-cut the waist edge to fit and adjust the length. How about an a-line skirt with the fur trimmed jacket? A really pretty Jackie 'O' look.

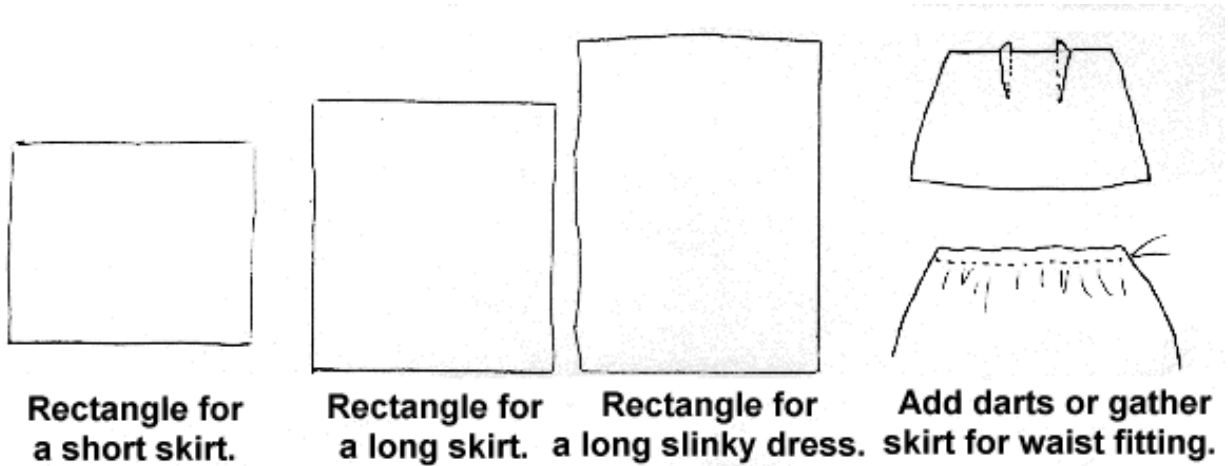
A quarter circle makes a lovely cape too. The doll dressed in the slinky black gown (it's just a rectangle) has a boa trimmed cape made from a quarter circle. I added a little collar to the cape as illustrated below. This cape is lined with a fine organza.



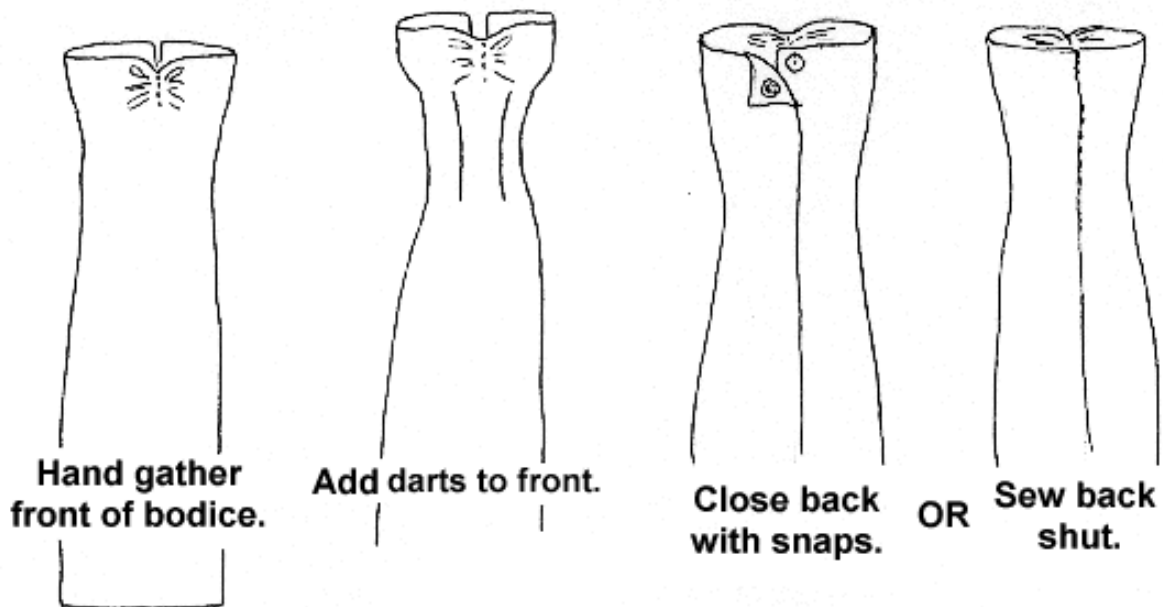
A straight skirt pattern is just a rectangle wide enough to go around your dolls body at it's widest point, plus the fold back placket allowance, by the length you want the skirt to be. Add darts at the

waist for fit, or slightly gather the waist, then sew on a waistband, which is just a waist length, plus 1" strip, folded lengthwise.

You can make this skirt any length, a short mini skirt, a long elegant skirt..or..make it go all the way from above the bust to the ankles, plus hems top and bottom, and you have an elegant, slinky evening gown. Make it from shiny satin, spandex or sequined fabric. Designers note...I don't like the sequined fabric that has the sequins sewn on. I like the ones that have the sequins pressed right into the fabric. I see it in fabric stores a lot. The "sequins" are smaller and it is easier to sew.



The long slinky dress I made, has the top edge folded to the inside about 1", then I hand gathered the center of the bodice after the dress was on the doll. I added 2 front darts starting just below the bust and ending just below the waist. I didn't add darts in back. I closed the dress with tiny snaps. You could of course just sew it closed. This dress just skimmed the doll's figure. This basic design can be embellished with beads etc. It looks so tailored and elegant, but can be made in minutes!



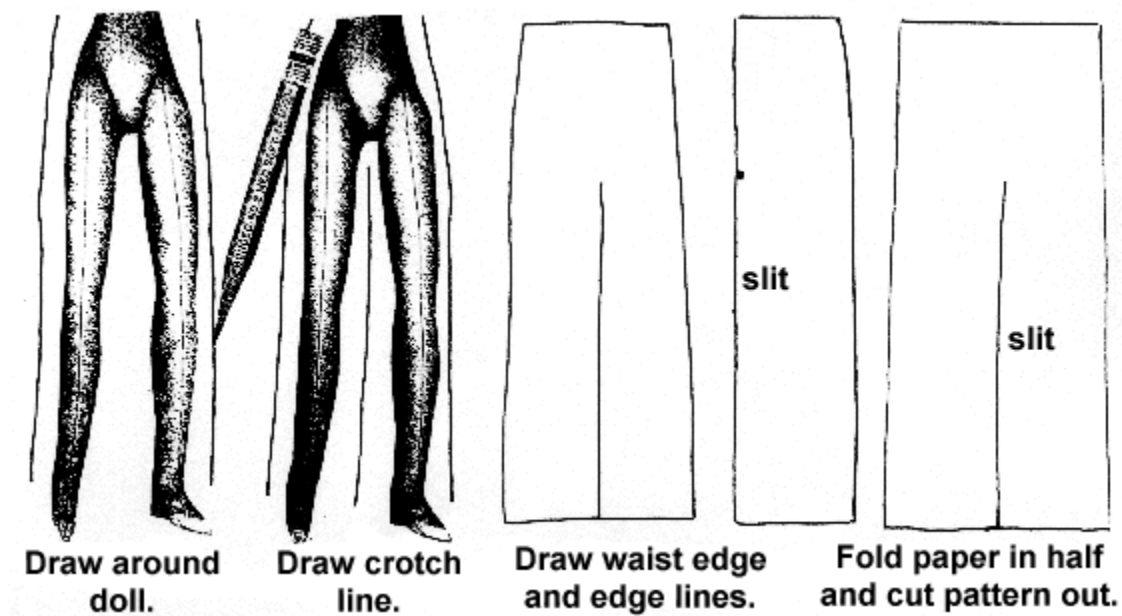
PANT'S PATTERN MAKING

Easy 2 piece pants, panties, pantaloons leggings etc.

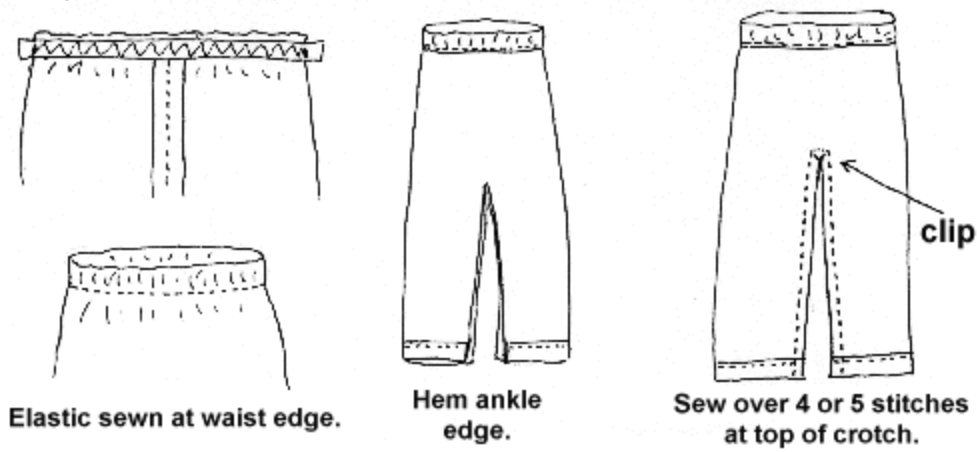
The doll/dolls you have designed in this class have the flatter 2 piece bodies so they can wear the easy, 2 piece pants. You have probably seen this type of pants pattern in lots of patterns. It is very easy and versatile. By simply shortening or lengthening, widening or narrowing it you can make all kinds of pants.

Lay your doll down on a piece of paper and draw around it as illustrated below, about 1/4" away from the body for a doll under 10" tall. Draw around it about 1/2" away from the body for a doll over 10" tall. Draw a line from 1/2" below the crotch to the ankle. Take the doll off of the paper and draw across the waist and across at the ankles. This will make a straight, tight pants pattern. Add hem and waist edge allowances.

Fold the paper down the center of the drawn pattern and cut it out, which makes both sides match. All of the different types of pants you may desire will be designed from this basic pattern.

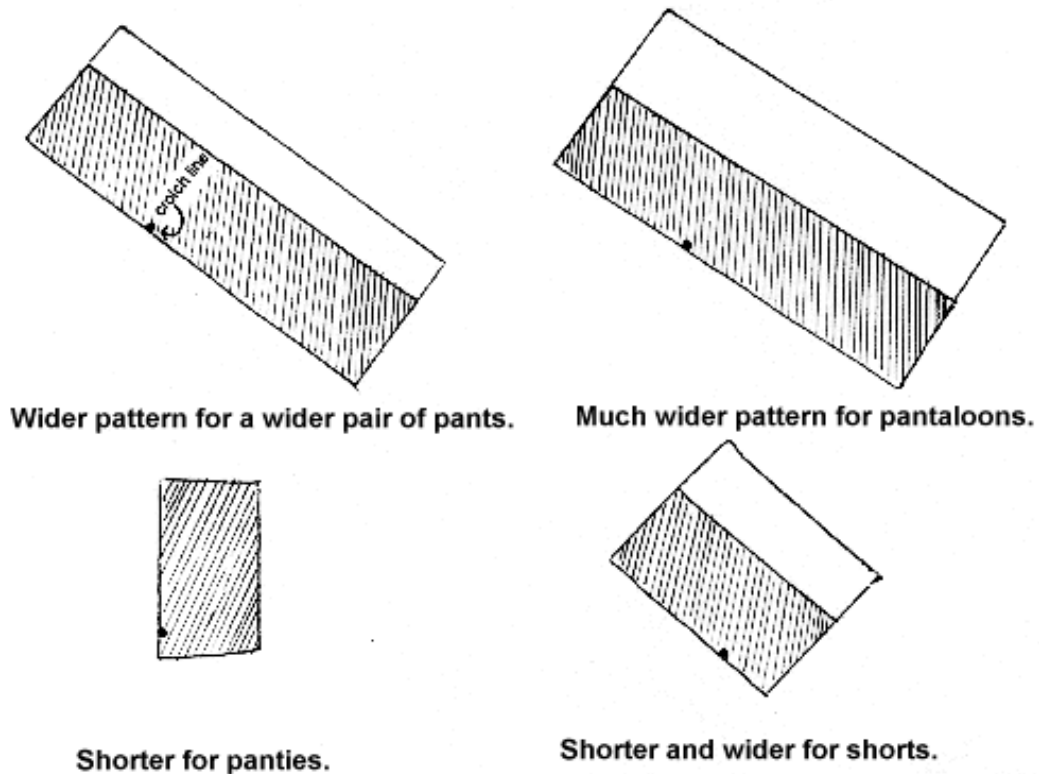


This straight, narrow pants pattern makes good leggings and is best made from a knit fabric. Sew one side seam, then stretch and sew narrow elastic to the inside waist edge. Sew the other side seam, and then turn the waist edge to the inside and top stitch all around the waist. Hem the ankle edges. Sew the crotch seam. I like to sew across 4 or 5 stitches at the top of the crotch, then clip to the seam before turning. The pants turn flatter and nicer this way.



Add or subtract width and/or length for other pants styles. Finish waist edges with elastic or by gathering with thread, crochet thread or silk ribbon. For pantaloons, finish the bottom edges with lace and elastic or gathering. For panties, finish the leg openings with lace. For sweatpants, finish the ankle edges with rib knit, which we covered earlier.

The basic pants pattern is shown shaded.



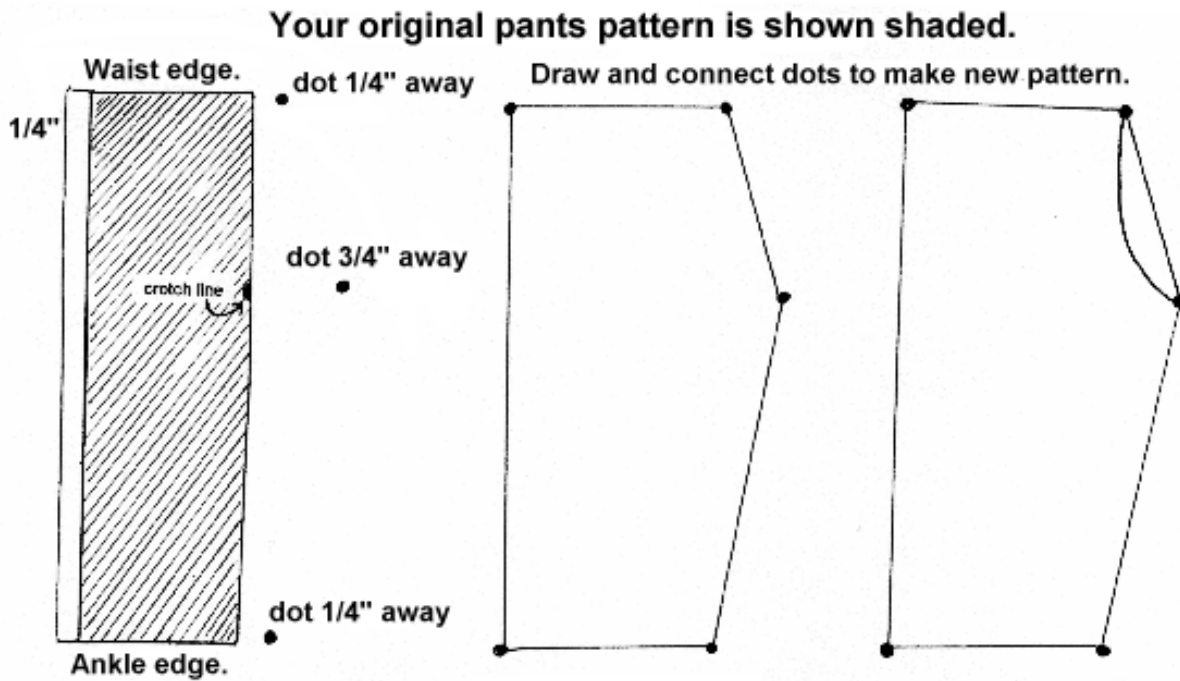
The length and width choice is up to you. You are the designer. Remember; you can make quick try ons from paper towels.

I told you earlier that I would show you how to design the 4-piece pants pattern. You will use your 2-piece pattern as a design template. Fold it in half lengthwise. All you will have is a rectangle. Put

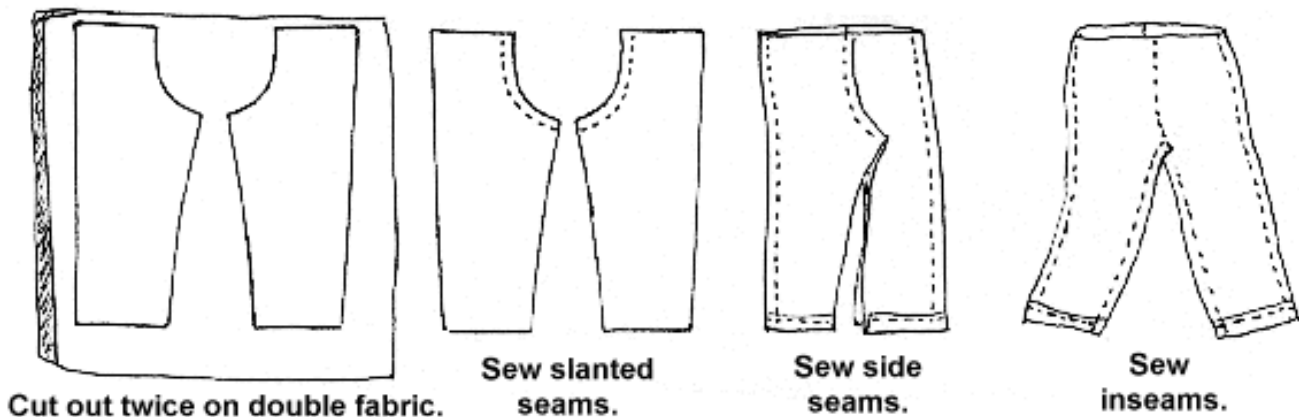
it on a new piece of paper. Mark the crotch line. Draw a line the full length of the rectangle, $1/4$ " from one long side. Make a dot $1/4$ " from the waist edge on the other side. Make another dot, $3/4$ " from the edge at the crotch level. Make another dot $1/4$ " from the ankle edge.

Draw a diagonal line from the waist dot to the crotch dot. Draw another diagonal line from the crotch dot to the ankle dot. Draw across the ankle edge and the waist edge. See illustration below make sense of the above.

Your original pants pattern is shown shaded.



To make pants from this pattern, cut out twice on doubled fabric. Sew slanted crotch seams. Sew sides together. Sew inseam. Of course finish waist and ankle edges as for 2 piece pants. This pattern will make straight, tight pants. Adjust width at the side seam, just as for the 2 piece pants. Adjust length as for the 2 piece pants too.

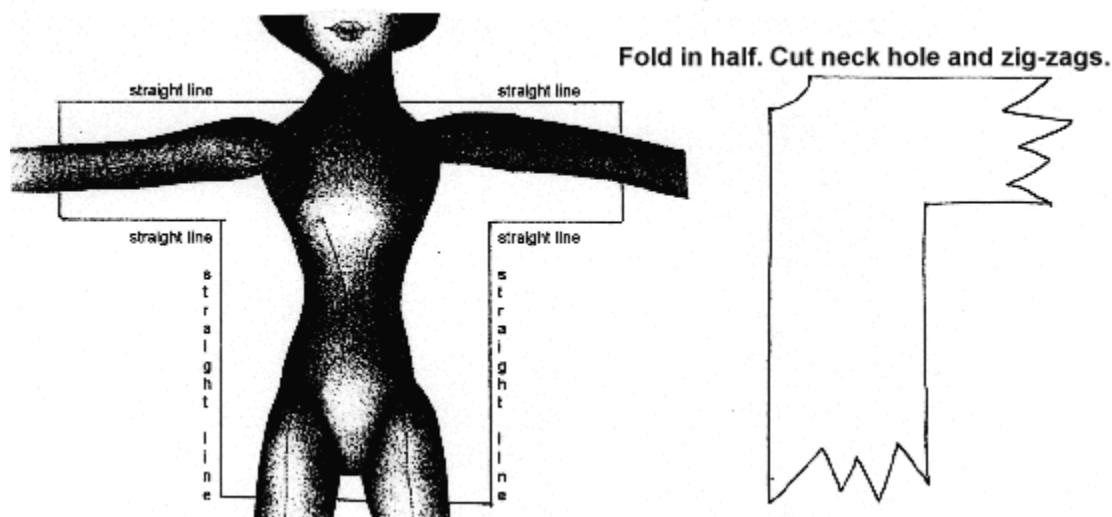


Now let's design a **VERY SIMPLE** tunic top. This is a great top for an elf, combined with tight leggings, or long stockings, or for an elf doll who's body and legs are made from print or colored fabric. This tunic is wonderful made from felt. No hemming or finishing needed. How about a doll with a leaf print body, and striped legs? Perhaps make the elongated feet shown in chapter 2.

Make them as long and silly as you want them. Maybe even wire the toes! Then you could curl them! Make the tunic from felt, so you don't even have to worry about hems and finishing. Lace the neck opening with crochet thread, yarn, thin leather or even raffia. Tie a simple cord or strip of leather around the waist for a belt. The elf doll pictured at the end of this class is dressed in this simple tunic pattern, along with long stockings and a widened pair of pants made from the 2-piece pattern. I cut fringe at the legs and gathered the legs and waist with crochet thread.

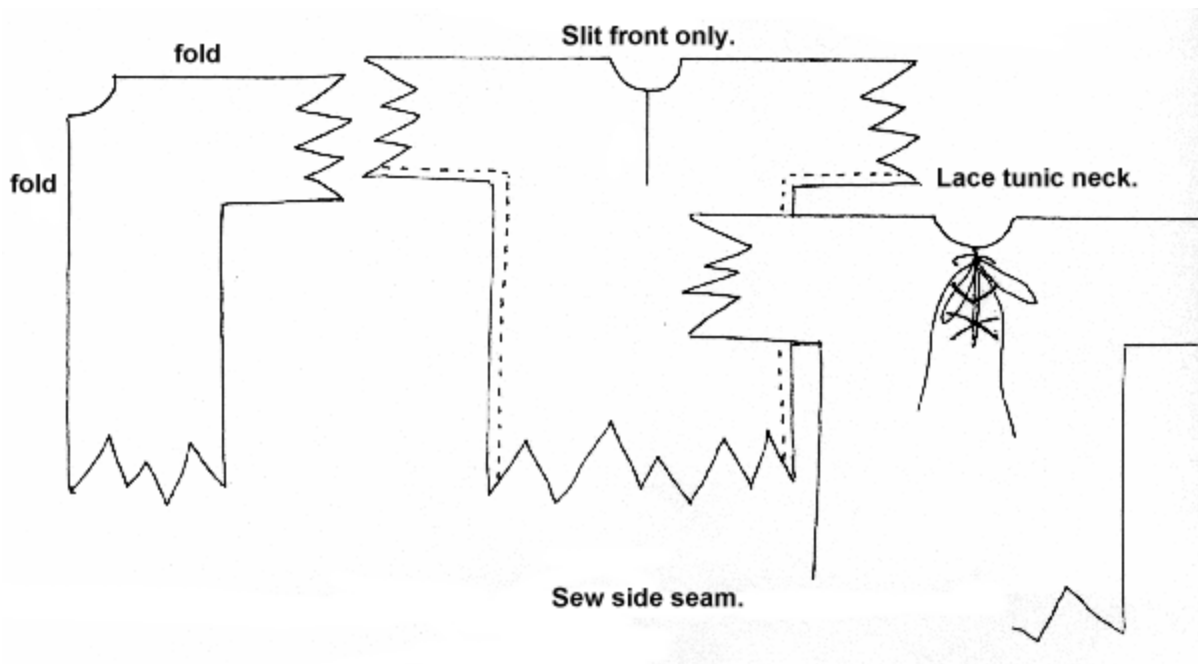
Put your doll down on a piece of paper.

Draw straight out from each side of the neck to about elbow level. Draw straight out from the under arm area, about 1/2" from the arm. Draw straight down the sides of the body about 1" away from the body for a doll over 10". About 1/2" away from the body for a doll under 10". If you want a wider, looser tunic, draw farther away from the body. Fold the paper down the center of the pattern you have drawn. Cut it out, evening up the lines you drew. At the arm and bottom of the tunic, cut zig-zag shapes. They don't have to be perfect; any old zig-zags you desire are fine. Cut a small neck hole. See the illustrations below.



Place this pattern on a double fold of felt and cut it out. Slit the front neck in the center just enough so you can get the tunic over your doll's head. Sew the side seams. Turn tunic right side out. Put on doll and lace the neck opening if desired.

My elf is pictured at the end of this lesson.



Now let's design a mermaid.

If you make a mermaid you don't even have to make legs for your doll.

But, you say, I don't know how to draw and design a fish bottom! Never fear, there are fish bottoms all over the place that you can trace, put on a copy machine and enlarge (or reduce).

I have some soap in my bathroom that would make the cutest little chubby fish bottom. I have a shower curtain that has several fish designs on it. I'll bet there are lots of coloring books with fish in them. My big dictionary has fish in it. There is no shortage of fish bottoms.

You only need the design from about the gills to the tail. You don't need the top or bottom fins either. To make your fish bottom symmetrical, fold it down the center from gills to tail and cut it out. Open it up and you have a nice symmetrical fish bottom for your mermaid.

A fish/mermaid bottom needs to be at least twice the length of the doll's body. Make it longer if you wish. It's your doll design. It needs to be wide enough at the top for the doll's hips to fit inside. Stuff your mermaid bottom with stuffing and plastic pellets so it will lie nicely. Ladder stitch or glue the dolls hips inside the fish bottom. Decorate the joining with a metallic trim, or anything you want.

Sew the fish/mermaid bottom from a glittery fabric, or paint it with scales etc. If you do quilting, how about outlining scales with quilting. The possibilities are nearly endless.

My mermaid has little round "boobs" made by gathering and stuffing circles, and then sewing them to her chest with a ladder stitch. She has sea shell buttons over her "boobs".

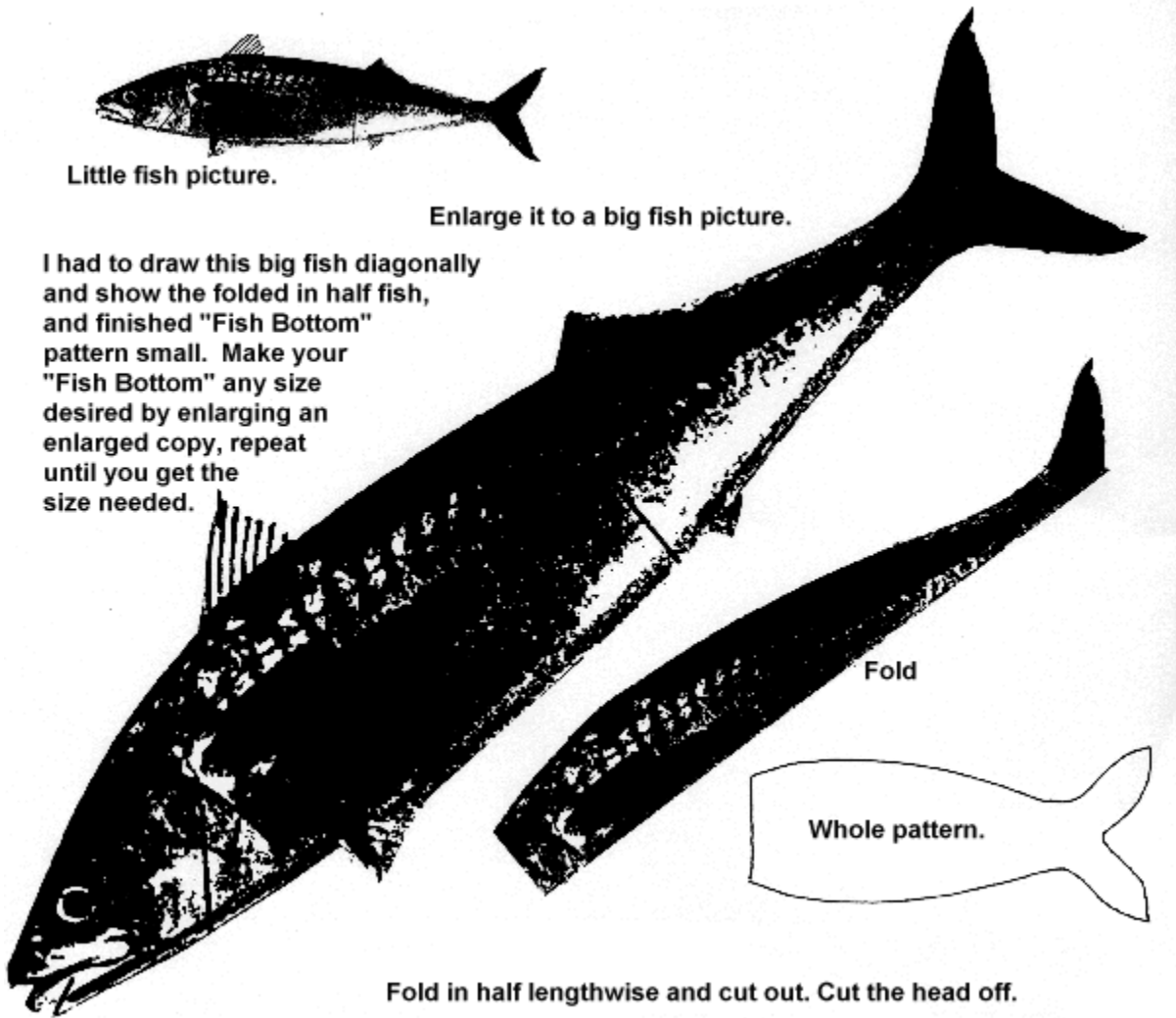
Her hair is made from metallic gift ribbons that I bought in the grocery store by the greeting cards. It was already curled and in bunches. I just hot glued 3 bunches onto her head. I added this and that to make a mini scene, and now she lives in my "fish bathroom" as the Granddaughters call it.



Little fish picture.

Enlarge it to a big fish picture.

I had to draw this big fish diagonally and show the folded in half fish, and finished "Fish Bottom" pattern small. Make your "Fish Bottom" any size desired by enlarging an enlarged copy, repeat until you get the size needed.



Fold in half lengthwise and cut out. Cut the head off.

My mermaid is pictured at the end of this lesson.

Chapters 9 - Shoes, hats, collars and places to find accessories.

Shoes, socks, hats, collars etc. to finish your doll's outfit are easy to design and make. The way you accessorize your creation can really add personality and originality to your doll.

Of course you can buy shoes, socks and accessories for you creations from a doll supply catalog. CRs crafts catalog is a good source for these items. You were given their address in your supplies needed information. I use a lot of "real" doll wigs and shoes for my dolls.

One way to make shoes and socks is to make the legs of your doll from a different fabric from the body. Make the legs from a color to co-ordinate with the clothes you plan to make for your doll, then paint simple shoes onto the foot with acrylic paint. You can add ribbon bows to the front of the "shoes" for a fancier look. This type of shoe is especially nice for a play doll, because children always loose the shoes when they come off.

I like to paint high heel shoes on too. Unless I can buy high heels that fit the doll I am making. High heels are not easy to make. With the more advanced High Heel foot you were taught, the painted high heels look just like shoes.

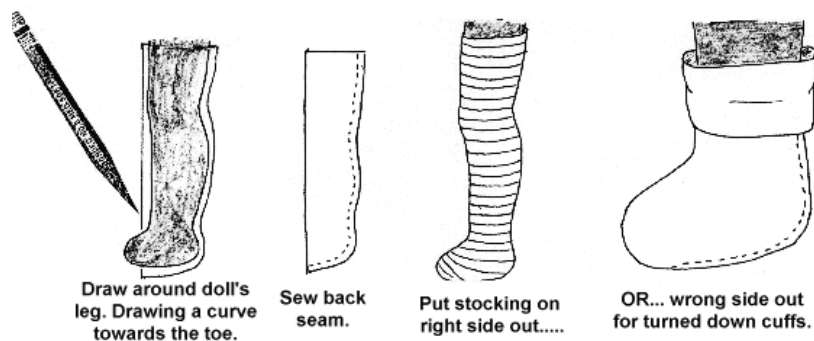
Socks/stockings can be made from the top of a child's thin anklet, rib knit or stretch lycra (swimsuit) fabric. Swimsuit fabric is my favorite for socks and stockings. It is very stretchy, and you can make the socks/stockings quite narrow and they will still go on. They fit very snugly, and hug the shape of your doll's legs. Swimsuit fabric is readily available in most fabric stores.

I like to make stockings very long for most of my dolls, clear up to the hips. They look like tights

To make a pattern for socks/stockings, lay your doll's leg down on a piece of paper. Draw a tube shape the length you want the sock/stocking to be, holding your pencil straight up and down. Draw a curve towards the toe.

The front edge is straight and the back edge can curve like the leg does.

Put the straight edge of the pattern on the fold of the stocking fabric, and cut the stocking out. Sew the back seam curving it at the foot area as illustrated.



Turn them right side out if they are long stockings. Leave them wrong side out, if you are going to turn them down for anklets. That way the raw seam doesn't show when you turn them down, and the shoes cover the raw seam in the foot area.

Shoes are a little more complicated to design, except for the simple 2-piece style. You may want to buy real doll shoes for your dolls. They come in lots of styles and will help your tightly jointed dolls to stand alone, because they have hard soles.

I will simply illustrate pattern making for a high button boot and a simple slip on shoe for a rounded foot doll. You can add a strap to the slip on shoe to make Mary Janes...or...ribbon ties.



**A simple high button boot pattern.
Close with little pearls or tiny buttons.**



**A simple slip on shoe
or Mary Jane pattern.**

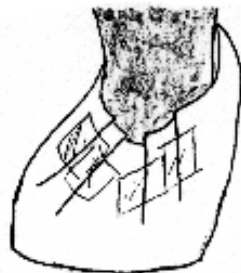
To make a shoe pattern for a shoe with a soft sole, first, cut a strip of paper towel long enough to fit loosely all the way around your doll's foot, and wide enough to reach the ankle. Pin it into your doll's foot at the heel seam, overlapping the ends.

Now pleat and tape the paper towel in the front, until the vamp of the shoe lies against the foot front.

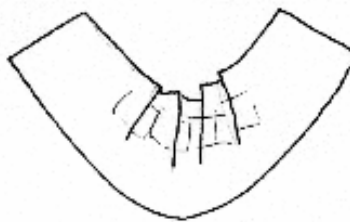
Un-pin the "shoe" and lay it flat, mashing the paper down til it lays flat. Draw around this paper towel pattern, evening it out. The pleats you made will have a zig-zag edge. You want to draw a nice smooth curved line.



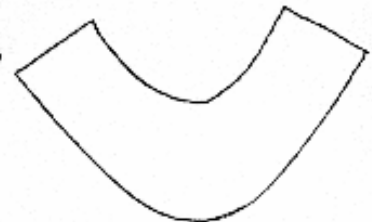
**Paper towel
pinned at heel.**



**Paper towel pleated
and taped in front.**



**Lay paper
towel flat.**



**Draw around paper towel to
even out the pleated edge.**

Now draw around your doll's foot, with the pencil held STRAIGHT UP AND DOWN. This makes the shoe sole.

Add 1/8" all around the shoe sole. It's best if it is a little too big for the top to fit onto. That way you can see the sole as you are sewing the top onto it.

Cut the shoes from felt for the first test pair. Sew the heel seam. Sew the top to the sole. Trim the seam around the sole. Turn the shoe right side out and try it on your doll. This method almost always results in a nicely fitting flat sole shoe. Add a strap if desired. Add trim to the front, a bow or flower perhaps.



You may want to refine the pattern a little after making the felt shoe. Perhaps curving it in at the instep a little more, or rounding out the toe a little more. Test each refinement by making a felt shoe before you make any shoes from lightweight leather.

A hat is often the crowning touch for your doll. Check out the craft stores and CRs Crafts catalog for a variety of hats, from baseball caps to velvet look bonnets. Very nice straw hats come in every size from miniature to human size and they are fun to decorate to match your doll's outfit.

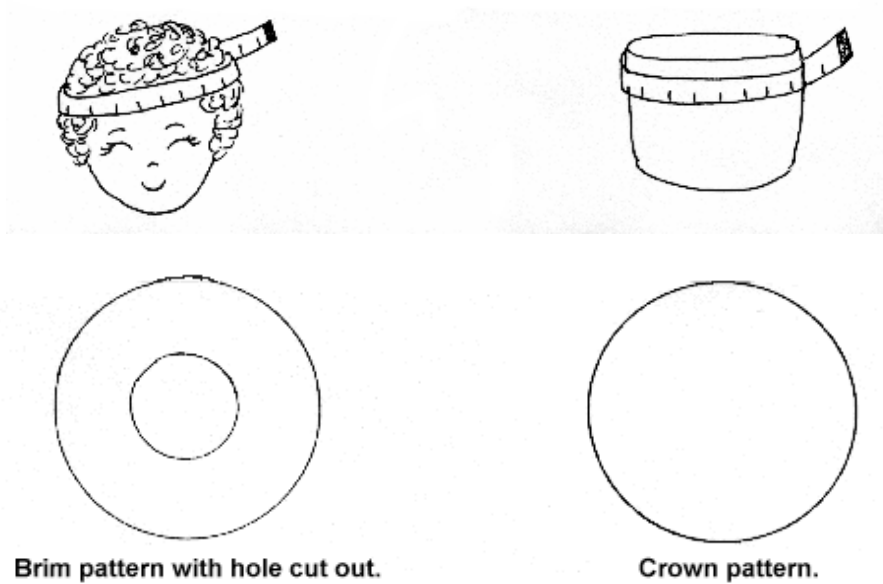
Let me show you how to make an easy Sun Hat or Picture Hat, using ordinary household objects to draw around, like cups, saucers, plates, lids etc.

First, measure around your doll's head. Next, find something like a glass or cup that measures the same size around as your doll's head. You will use this item to draw around in the center of the big brim circle that you will make. Don't draw anything yet.

Now decide how big around you want the brim to be. It will be a circle too. Usually a plate or saucer will be the right size.

Draw around the chosen plate etc. on a piece of paper. This is the brim pattern. Now you need to make the head sized hole in the brim pattern. Put the item you selected that was the right head size for your doll, in the center of the brim pattern, and then draw around it. Cut the brim pattern out, and cut the hole out of it.

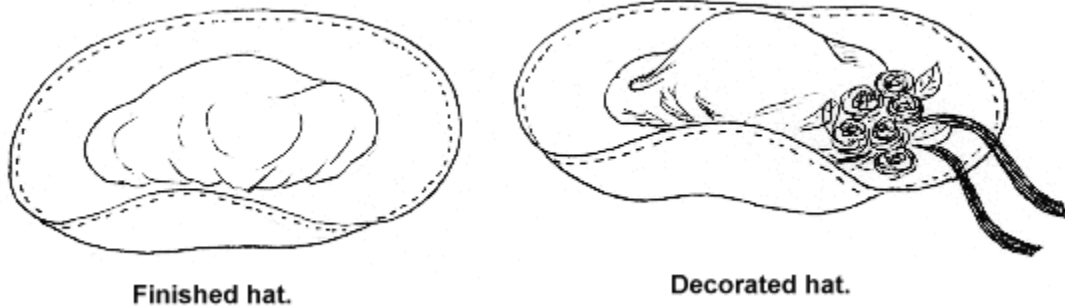
Now cut another circle from the brim pattern, without the hole cut out, for the crown pattern.



Cut the brim from doubled fabric and cut one brim from interfacing. Cut one crown from a single layer of fabric. Sew all around the outside edge of the brim and interfacing “sandwich”. Turn the brim right side out. Press, and then top stitch all around the outer edge.

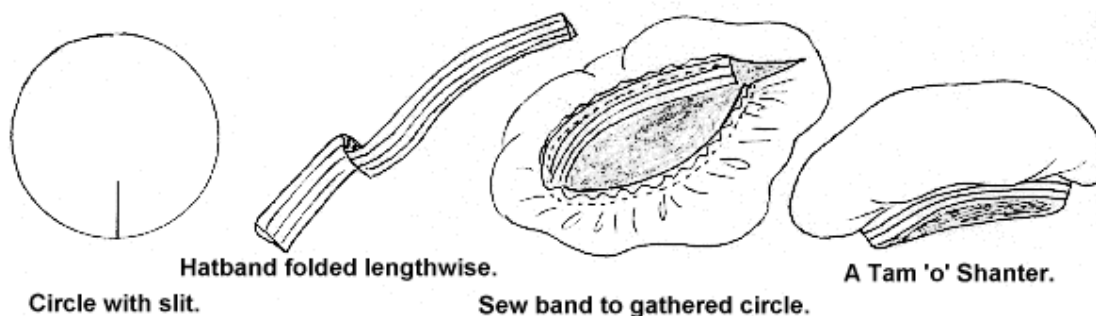
Gather the crown piece all around the outside edge, and then, fit, pin and sew it into the hole in the center of the brim. Turn the raw edge to the inside and top stitch. Decorate the hat with flowers, ribbons etc.

This easy hat is pretty on both child and adult dolls.



Another easy hat is a Tam ‘o’ Shanter or Beret. It too can be made from a simple circle. Use the crown pattern you made above, and cut the circle from mid weight fabric of your choice. Cut a 3” long slit in one edge of the circle. Measure your doll’s head, and cut a strip of fabric that long plus 1”, and twice as wide as you want the hatband to be.

As an example, 10" long by 3" wide. You will fold the hatband lengthwise, and then sew the hatband to the gathered edge of the circle, starting and ending at the slit. Sew the slit and band seam. Turn right side out and you have a dapper Tam 'o' Shanter.

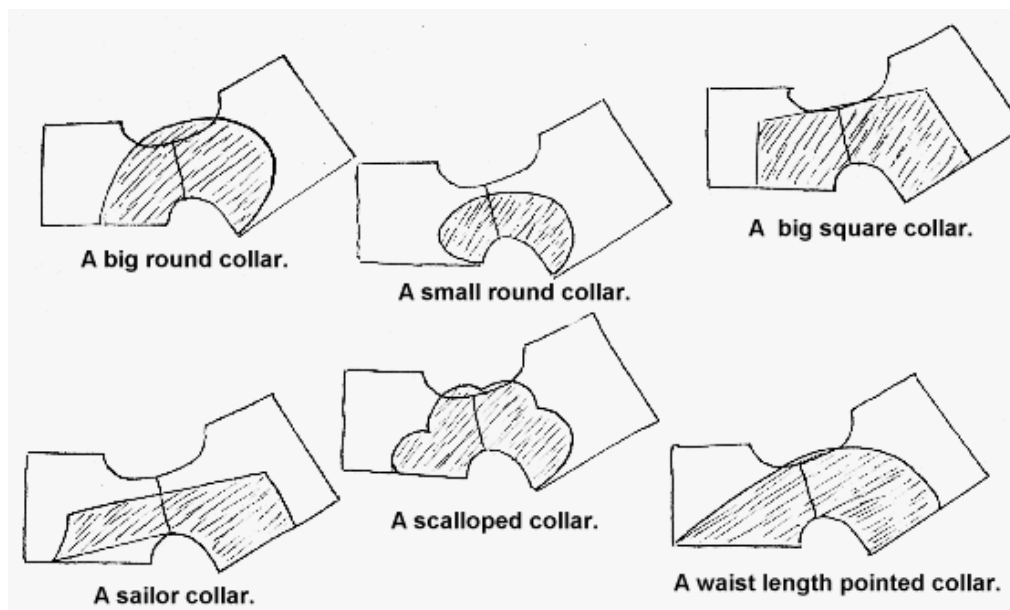


Collars will add lots of variety to basic clothing patterns. You will use the bodice or shirt pattern that you made for your doll As the guide for designing collar patterns.

Place the bodice front at the fold edge of a piece of folded paper. Place one bodice back in place, as illustrated, matching and overlapping the shoulder seams.

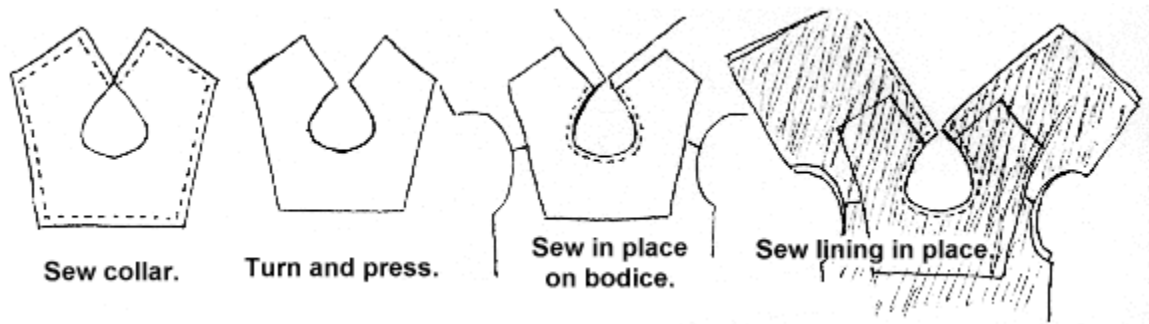
I will illustrate some collar shapes that can easily be designed this way, and each one will fit the bodice pattern that you designed from.

You will have to free hand the parts that are under the bodice...or...place the bodice pattern UNDER tracing paper...or...pencil the back of the bodice pattern, and then you can draw right on it and it will act as a carbon, and your lines will be transferred to the new paper.



Collars will be cut from double fabric, and usually interfaced. Sew collars around the outside edge, then turn and press. When you make lined bodices, collars will be sewn in place around the neck

edge of the bodice, on the right side. The lining will be sewn around the neck edge and down the backs over the bodice with the collar sewn on.



Clip neck curves, trim corners the turn the whole bodice right side out.

I hope you have enjoyed this designing class and are well on your way to feeling fairly confident with venturing into more doll designing variety! Keep doing it and making different kinds and styles of dolls. Be adventuresome and take a chance with different fabrics, different techniques, different combinations and just have FUN with it.

LET ME LEAVE YOU WITH SOME “BRAIN SEEDS”

- A doll with striped legs and arms, dotted body and checked skirt.
- A doll that is all green, in a black robe, made from the tunic design, and a cape too.
- The upper part of a doll in the neck part of an animal, how about a giraffe body with a long skinny doll in the neck area.
- A doll with huge hands and feet, perhaps wearing real kid tennis shoes, long skinny arms, legs and body and a little head.
- Dress it in a T-shirt and shorts, give it a basketball and ta-da your favorite basketball player.
- A short, chubby baby in a gown made like a high waisted dress or from the tunic design (no zig-zags)
- A jester, think long stockings and tunic
- A young girl, think pretty and pastel
- A fat funny elf, think natural fibers and frayed edges
- A dainty fairy, think soft and flowing – A 50s era girl, think poodle skirt, sweater and ponytail.
- A pioneer, think muted colors and a full skirt.
- A clown, think bright colors, baggy clothes and outsized hands and feet.

THINK-DESIGN-THINK-DESIGN-THINK-DESIGN!!!

AND HAVE FUN!!!

I hope you have enjoyed the designing ideas and methods that allow a non-designer and non-artist, become a designer and make all kinds of doll designs and things with the use of a few mechanical, visual and household objects. For many of you, the use of these “crutches” will soon enable you to design without them, as practice and use demystifies the mysteries of design.

As you become more adventurous with your designing, and let your drawing flow, your designs materialize, and realize that there is not just “one” way that is “right”, your designing will blossom!

Practice and observation will make the seemingly impossible or difficult, take on a whole new aura. With each doll you design, the process will become less difficult. You will find the ability down inside to stretch your designs, and freehand things you never thought possible.

HAPPY DOLL DESIGNING AND DOLL MAKING!

JUDI

Judi Ward
Judi's Dolls
<http://JudisDolls.com>